


APPLICATIONS

Premium quality flanged troffer suitable for drywall, plaster and Z-spline ceilings. Ideal for commercial and industrial buildings requiring general illumination with flanged configurations.

FEATURES & BENEFITS

- ◆  Technology - Post Powder Paint
- ◆ > 90% reflectivity
- ◆ Corrosion and scratch resistant
- ◆ Smooth edges for easy handling
- ◆ Four adjustable Uni-Lugs for easy installation
- ◆ Fixture end flanges are removable for row mounting
- ◆ Joiner channels are included
- ◆ Snap-in ballast covers can be removed when lamps are installed
- ◆ Corner hinging for easy insertion and removal of shielding frame
- ◆ Flush steel lens frame is screw assembled for easy diffuser replacement
- ◆ Housing ends are secured by unique corner interlock and screws
- ◆ Heat sink embossments behind ballasts for cooler operation and longer life
- ◆ Metal to metal light leak protection on all four sides of shielding frame
- ◆ Pre-lamp available
- ◆ Equipped with Integral Earthquake Clips
- ◆ **UL** listed for damp location



SPECIFICATIONS

Housing is die-formed and embossed from cold rolled steel for extra rigidity and strength. Finish is high reflectance P3 - Post Powder Paint. Designed for installation in drywall ceilings. Fixtures are installed from below the ceiling and have overlapping trim flanges. Adjustable Uni-Lugs secure the fixture to the ceiling. Listed by and bears UL label. Listed by and bears **UL** label.

ORDERING DATA

EXAMPLE: RF22-32MV125B1

RF							
Series	Size	Nbr. of Lamps (per cross section)	Lamp Type	Ballast ⁽¹⁾	Lens	Options	
RF	14 1x4		17 T8 24"	MV 120 - 277V	Blank	A12 .100 thick lens	See Options Chart
Flanged	22 2x2		32 T8 48"	PMV Program Start	125	A12 .125 thick lens	
Troffer	24 2x4	1	54 T5 HO 46"	MV	156	A19 .156 thick lens	
		2	U32X 6" U-Bent T8 (2x2 Only)	120V Electronic 120V	CL	Clear .100 thick lens	
		3	U32Y 15/8" U-Bent T8 (2x2 Only)	277V Electronic 277V	CL125	Clear .125 thick lens	
		4		R120 Resi Electronic 120V	SW	Smooth White .100 thick lens	
					S5	Specular Parabolic Louver (1/2"x1/2"x3/8")	
					S7.5	Specular Parabolic Louver (3/4"x3/4"x3/8")	
					S1.5	Specular Parabolic Louver (1 1/2"x1 1/2"x1")	
					W5	White Parabolic Louver (1/2"x1/2"x3/8")	
					DD	Drop Dish Lens	
					A78	78 Cell (2x4) or 36 Cell (2x2)	
					NL	No Lens	
					NFL	No Frame and Lens	

Notes:

(1) Dimming add suffix (i.e MVD)

*Please note that Mobern carries a full line of CEE approved, high efficiency ballast required for enhanced energy savings and/or utility rebate programs. Products include, but are not limited to, instant and program start ballast, high, normal and low power factor ballast, step and variable ranged dimmable ballast and the high efficiency lamps and controls needed to round out your package.

Dimensions and specifications subject to change without notice.



◆ 800-444-WATT ◆ www.mobern.com ◆

8200 Stayton Dr., Ste. 100, Laurel, MD 20723

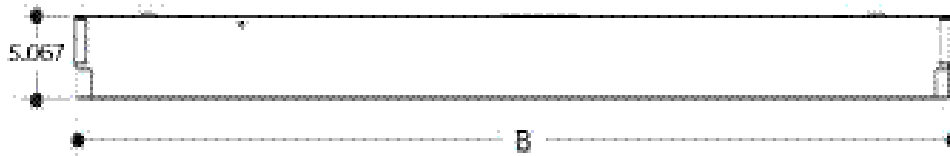
CAT#

JOB NAME

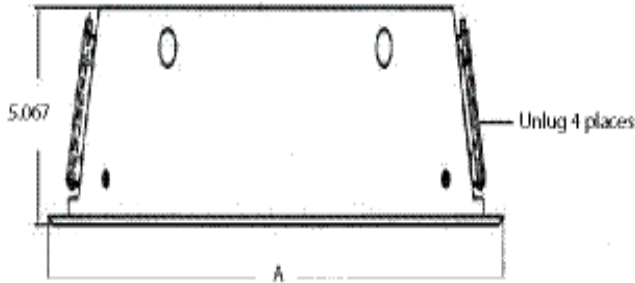
TYPE

DIMENSIONS

SIDE VIEW



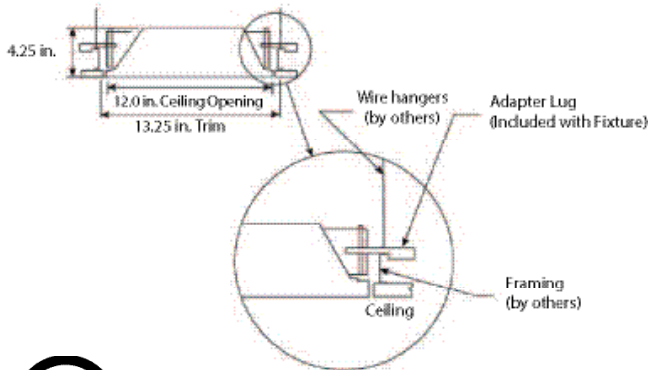
END VIEW



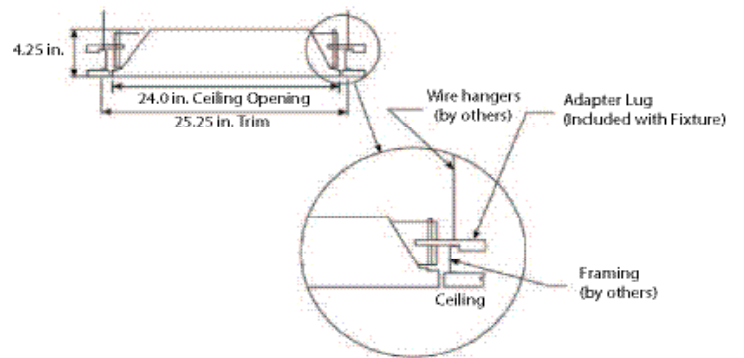
MODEL CONFIGURATION	A	B
1' x 2'	13 1/4"	26 1/2"
1' x 4'	13 1/4"	50 1/2"
2' x 2'	25 5/8"	25 3/4"
2' x 4'	25 5/8"	49 3/4"

ROUGH-IN OPENINGS	A	B
1' x 2'	11 1/4"	24 1/4"
1' x 4'	11 1/4"	48 1/4"
2' x 2'	23 1/4"	24 1/4"
2' x 4'	23 1/4"	48 1/4"

RF1x4 Dimensions



RF2x4 Dimensions



Dimensions and specifications subject to change without notice.



◆ 800-444-WATT ◆ www.mobern.com ◆

8200 Stayton Dr., Ste. 100, Laurel, MD 20723

CAT#

JOB NAME

TYPE

PHOTOMETRICS

IES INDOOR REPORT
PHOTOMETRIC FILENAME : RF241-432MV.IES

Candela Distribution																														
Effective Floor Cavity Reflectance 0.20																														
Room Cavity Ratio (RCR)	80					70					50					30					10					0				
	RW	70	50	30	10	70	50	30	10	50	30	10	50	30	10	50	30	10	50	30	10	0								
	0	87	87	87	87	85	85	85	85	81	81	81	78	78	78	75	75	75	73											
1	80	77	74	71	78	75	73	70	72	70	68	69	68	66	67	65	64	63												
2	74	68	63	59	72	66	62	59	64	60	57	62	59	56	59	57	55	53												
3	67	60	54	50	66	59	54	50	57	52	49	55	51	48	53	50	47	45												
4	62	54	47	43	60	53	47	43	51	46	42	49	45	41	48	44	41	39												
5	57	48	42	37	56	47	41	37	46	41	37	44	40	36	43	39	36	34												
6	53	44	37	33	52	43	37	33	42	36	32	40	36	32	39	35	32	30												
7	49	40	33	29	48	39	33	29	38	33	29	37	32	28	36	32	28	27												
8	46	36	30	26	45	36	30	26	35	29	26	34	29	26	33	29	25	24												
9	43	33	27	23	42	33	27	23	32	27	23	31	26	23	30	26	23	22												
10	40	31	25	21	39	30	25	21	30	25	21	29	24	21	28	24	21	20												

OPTIONS

Brands		Performance Levels			
Code No.	Description	Ballast			
A	Advance	Manufacturer	Standard - Leave blank if no preference	High Efficiency Instant Start	High Efficiency Program Start
G	GE Ballast	Advance (A)	Centium ICN (A)	Optanium (AL, AN, AH)	Optanium PS (APL, APN ???)
L	Lutron	GE (G)	Proline GE (G)	UltraMax (GL, GN, GH)	UltraStart (GPL, GPH, GPH)
S	Sylvania Ballast	Osram/Sylvania (S)	Quicktronic Pro (S)	Quicktronic QHE (SL, SN, SH)	ProStart (SPL, SPN, SPH)
U	Universal	Universal (U)	ULT STD Electronic (U)	HP Electronic (UL, UN, UH)	AccuStart (UPI, UPN, UPH)

- B1** T8/T5 1L 500 Lumens Battery Backup (B11)
- B2** T8/T5 1L/2L 700 Lumens Battery Backup (B48)
- B3** T8/T5 1L/2L 1400 Lumens Battery Backup (B223)
- B51** T5HO 1L 500 Lumens Battery Backup (B625)
- B52** T5HO 1L 800 Lumens Battery Backup (B585)
- B53** T5HO 1L 1300 Lumens Battery Backup (B626)
- 11** Dual Ballasts 1 Lamp + 1 Lamp
- 21** Dual Ballasts 2 Lamp + 1 Lamp
- 22** Dual Ballasts 2 Lamp + 2 Lamp
- 31** Dual Ballasts 3 Lamp + 1 Lamp
- L35** 735K Lamps Installed
- L41** 741K Lamps Installed
- L841** 841K Lamps Installed
- L835** 835K Lamps Installed
- RIF** Radio Interference Filter
- WP** Whip 6Ft 3 Wire
- WP4** Whip 6Ft 4 Wire
- XS** Silver MIRO4 Reflector
- WR** White Regress Door
- RA** Regressed Aluminum Door
- G** Gasketing



Dimensions and specifications subject to change without notice.



800-444-WATT ♦ www.mobern.com ♦

8200 Stayton Dr., Ste. 100, Laurel, MD 20723

CAT#

JOB NAME

TYPE