

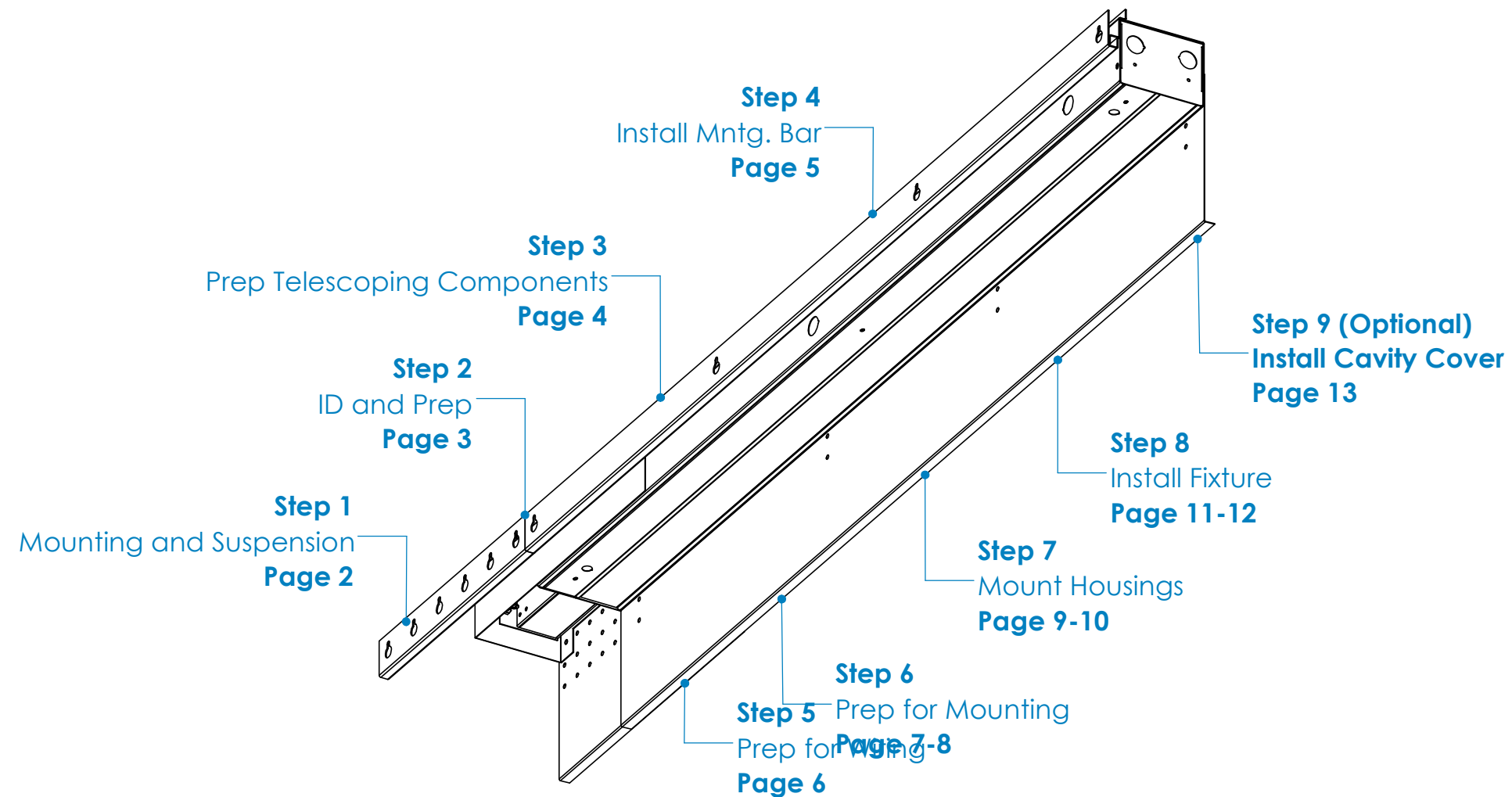
# PRL-Telescoping Installation Instructions

## Overview



### WARNINGS

- This product must be installed in accordance with all applicable codes by a person familiar with the product.
- Each fixture must be **properly supported** during install.
- **DO NOT** join fixtures on the floor prior to lifting, or damage will occur.
- **Before beginning installation**, review our complete list of warnings by visiting [www.saylite.com/warnings](http://www.saylite.com/warnings).



Form MCM - PRL-TELE, V1, 07/20

Your particular build may vary.

2020© Saylite | 2055 Luna Road, Suite 142, Carrollton, Texas 75006 | [www.saylite.com](http://www.saylite.com)

# PRL-Telescoping Installation Instructions

## Step 1 - Mounting and Suspension



### Mounting Options

#### Drywall or other hard surfaces - Hook and Chain OR Threaded Rod

- Install chains at mounting locations.
- Ensure chains/hooks are secure.
- Prepare fixture for mounting.

#### OR

- Install 2x4 studs above where fixture will be mounted
- Install threaded rod to 2x4 studs at mounting locations
- Prepare fixture for mounting

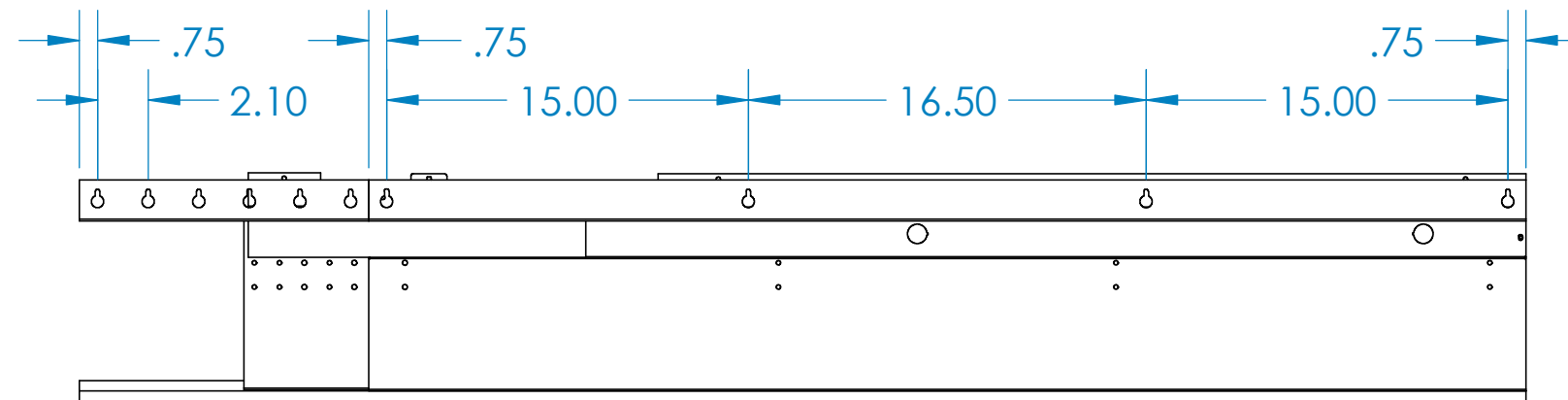
Other hard surfaces include: wood, sheet metal panels, steel beams, concrete or masonry. Use hardware appropriate for each surface and material type.

### Suspension Locations

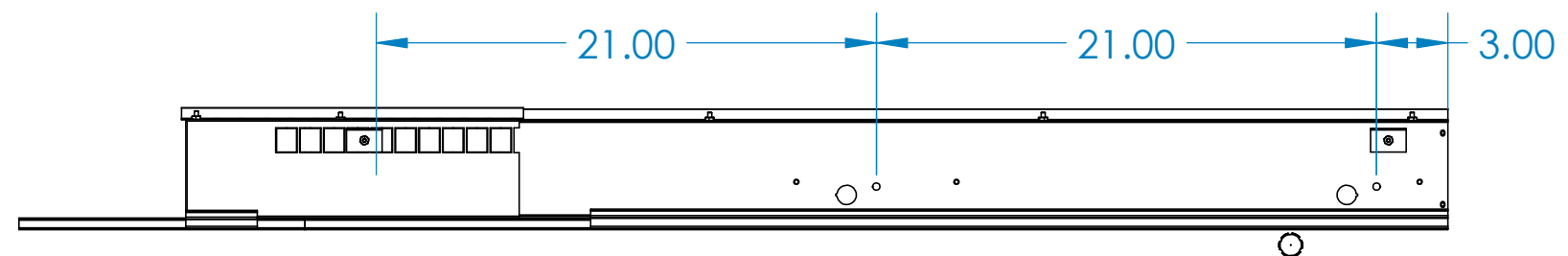
**X** = Suspension Dimensions

Refer to Assembly Drawings and building plans to determine exact mounting, suspension points, and power feed locations.

#### Hook and Chain Mounting



#### Threaded Rod Mounting



PRL-Telescoping Installation Instructions  
Step 2 - Identification and Preparation

A. Identify Fixtures

SayliteLED

Texas Fluorescents Reinvented

PART# PRLWXXSFXXLTXXWXXXXLDMV

VOLTAGE: 120-277, 50/60HZ

WATTAGE: XX MAX

FLUX: XXXX LUMENS

CCT: XXXX

DATE CODE: XX/XX/XX

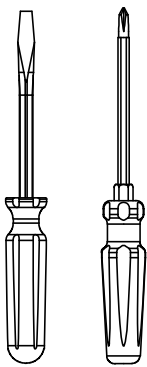
TYPE: XX

- Use labels found on the box and inside the fixture bodies to identify bodies.
- **NOTE:** Locations of labels can vary.
- Remove all fixtures from their boxes.
- Organize fixtures based on their labels at the install location.

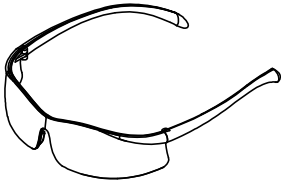
Kitted Hardware

- Saylite has provided the items listed here, with their Saylite part numbers listed. These items can be found in separate boxes shipped with the fixture.
- Ensure all parts are accounted for and set them aside until needed.
- Any additional hardware needed for this installation will be provided by others.

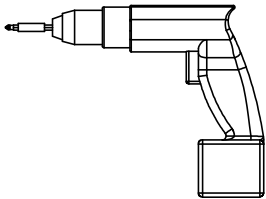
B. Tools Needed



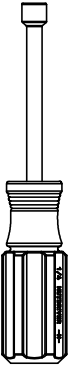
Screwdrivers



Safety Glasses



Drill



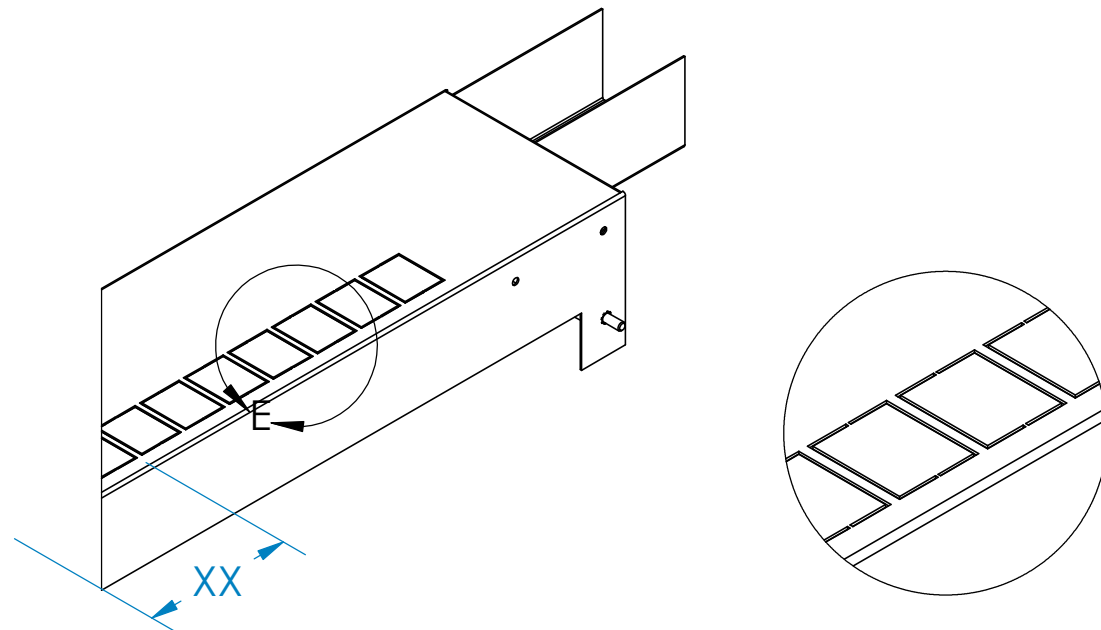
Nut Driver

- Always use proper safety equipment when installing fixtures.
- Tools shown are recommended for standard install. Tools needed may vary based on actual install location conditions.

# PRL-Telescoping Installation Instructions

## Step 3 - Prepare Telescoping Components

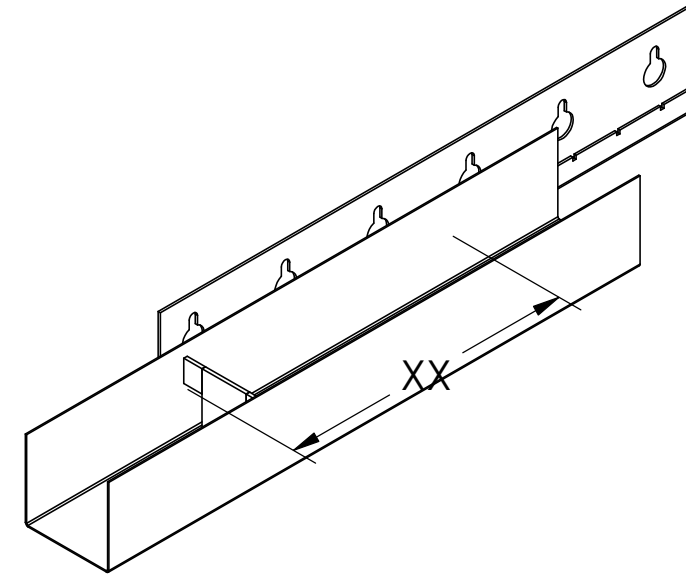
### A. Adjust Telescoping Housing



DETAIL E  
SCALE 1 : 2

- If telescoping length less than 12" is desired, cut out notches on telescoping housing to achieve desired length.
- Be sure to measure cut length from highlighted notch surface shown in Detail E.
- \*\*For threaded rod mounting, cut the entire housing at desired length.

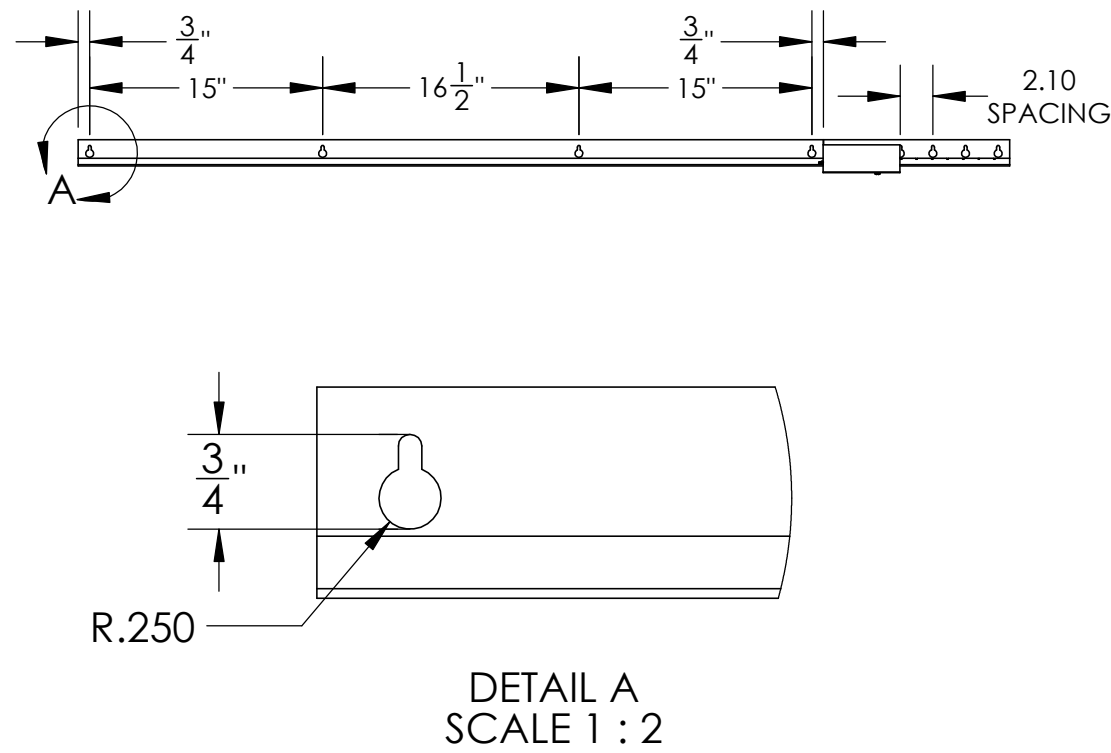
### B. Cut Telescoping Mounting Bar



- If telescoping length less than 12" is desired, cut the telescoping mounting bar to achieve desired length.
- Be sure that length cut off is equal to cut length of telescoping housing notches.

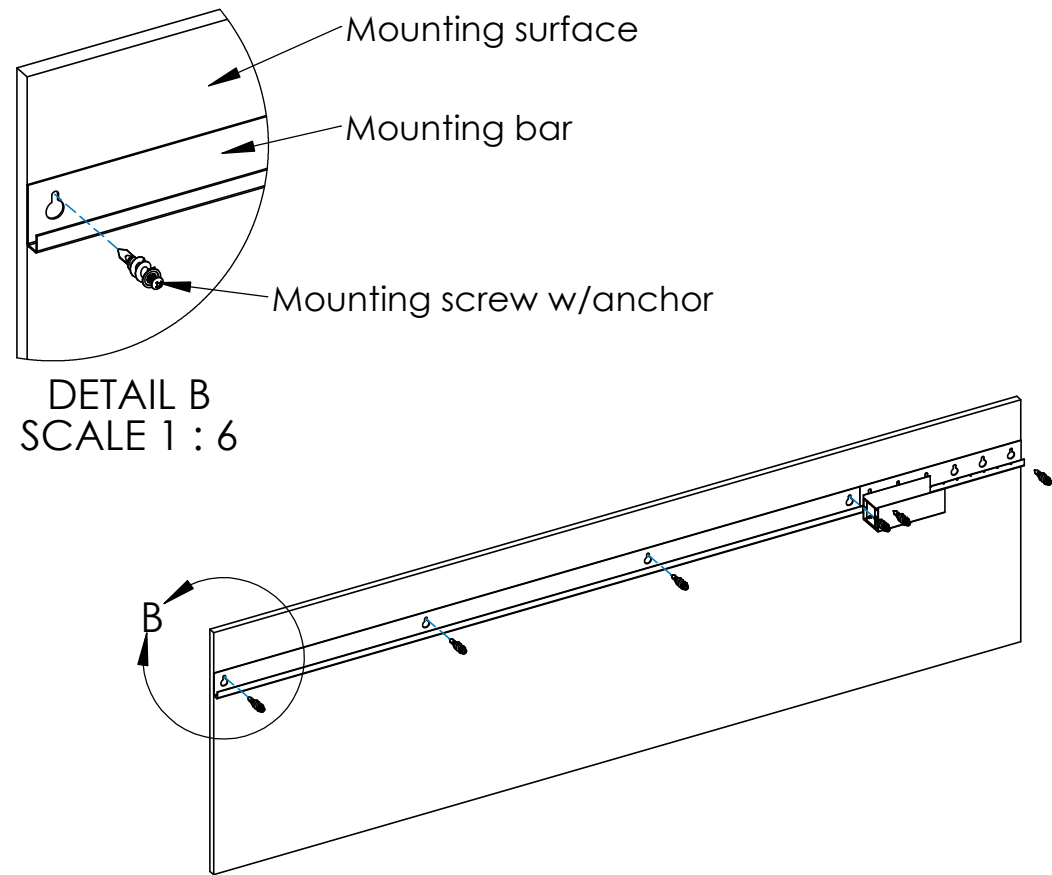
**PRL-Telescoping** Installation Instructions  
**Step 4** - Install Main Mounting Bars

**A. Transfer Measurements**



- Measure keyway distances on the mounting bars and transfer the measurements to the mounting surface.

**B. Secure to Mounting Surface**

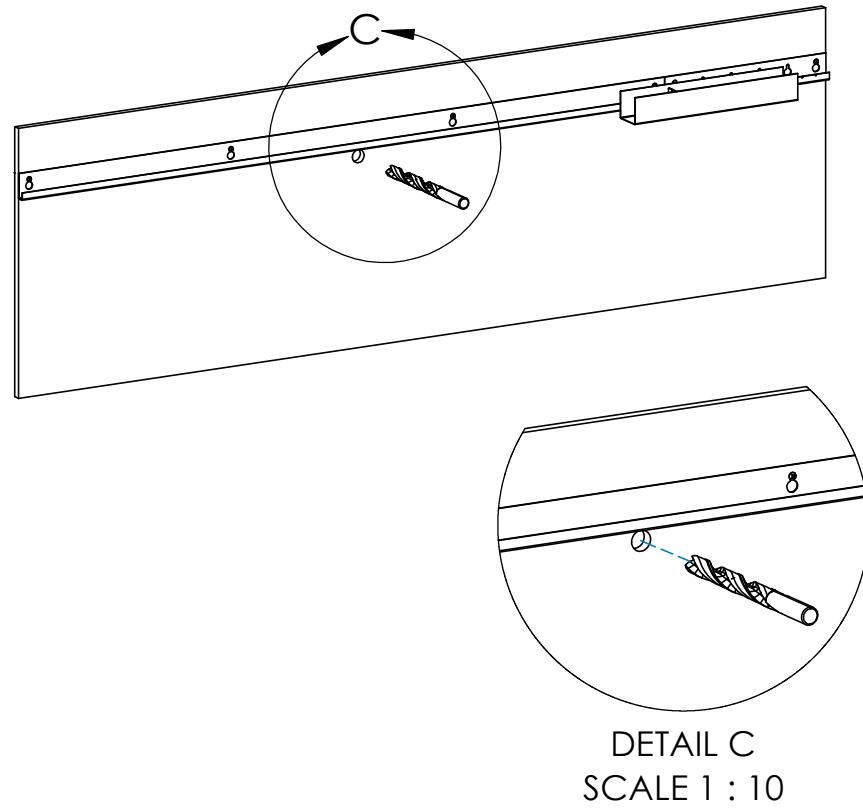


- Secure the mounting bars to the mounting surface using the mounting screws (not provided).

## PRL-Telescoping Installation Instructions

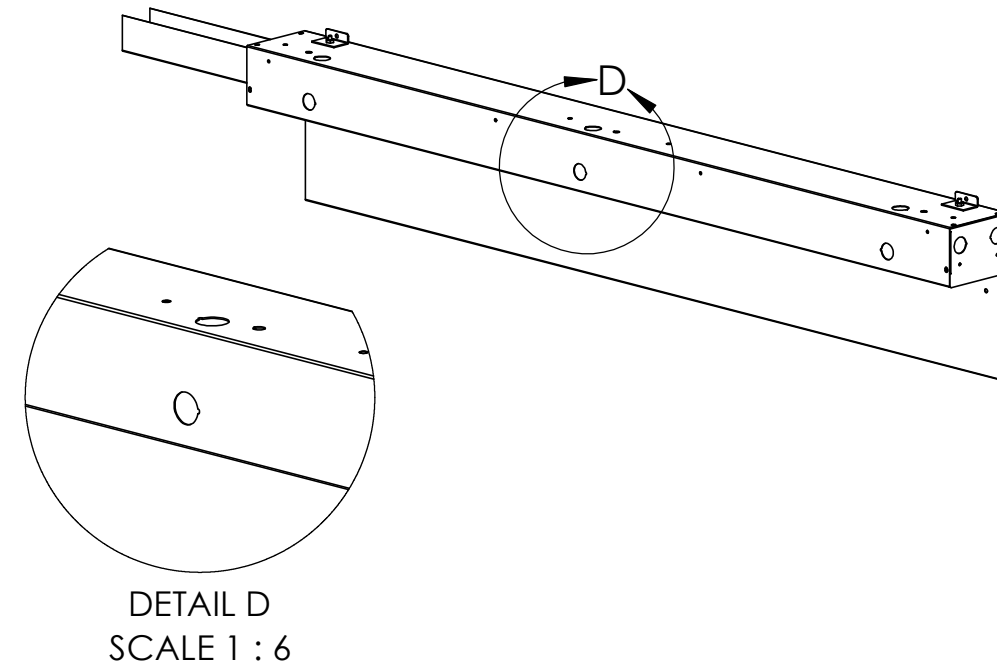
### Step 5 - Prepare for Wiring

#### A. Drill Hole in Mounting Surface



- Using a 3/4" drill bit, drill a hole to allow supply wiring to pass thru.
- Use caution when drilling to avoid damaging components inside the wall.

#### B. Remove Knockouts

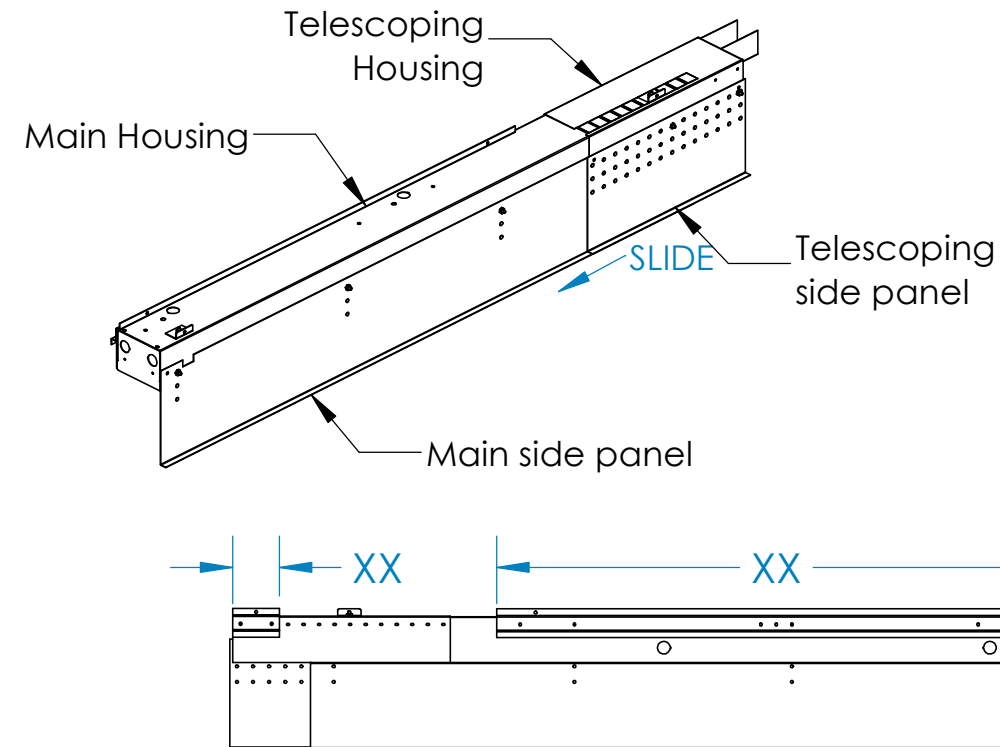


- Using a gentle prying motion, removed the 7/8" knockout from the desired location.

# PRL-Telescoping Installation Instructions

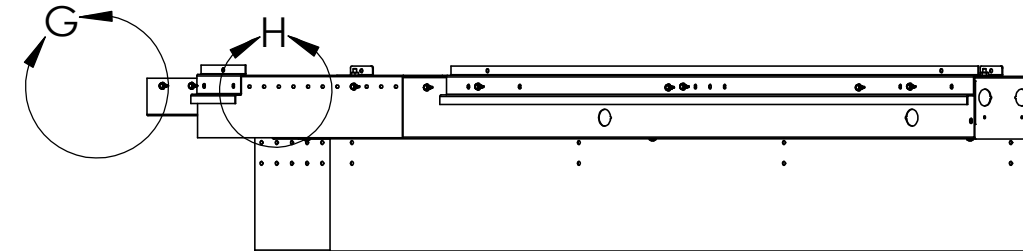
## Step 6 - Prepare for Mounting

### A. Assemble Housings

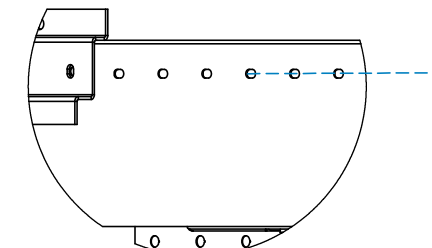
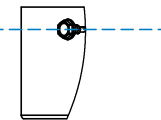


- Slide the telescoping housing over the main housing until it stops. It may be necessary to remove the telescoping side panel before assembling housings.
- Secure telescoping side panel to main housing using overlapping pem stud and provided nut.
- After assembling housings, determine desired location of side mount brackets.

### B. Secure Side Mount Brackets



DETAIL G  
SCALE 1 : 4



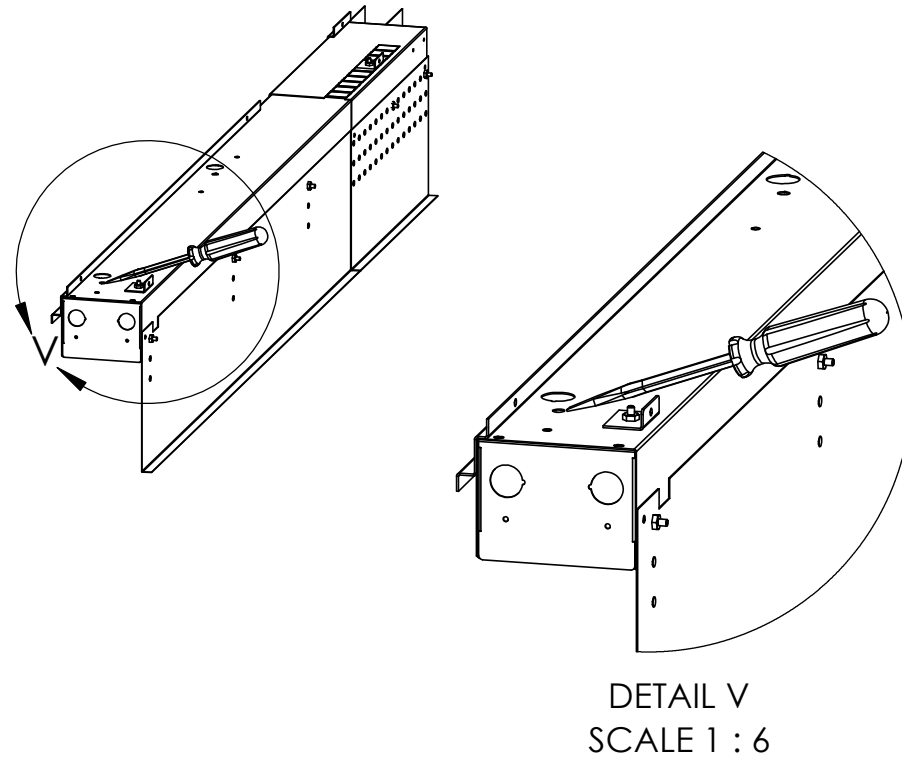
DETAIL H  
SCALE 1 : 4

- Secure the side mount brackets to the Main Housing and Telescoping Housing using TEK screws.
- Ensure that side mount brackets are in desired locations.
- Secure telescoping housing to main housing using TEK screw at location(s) shown in Detail H.

# PRL-Telescoping Installation Instructions

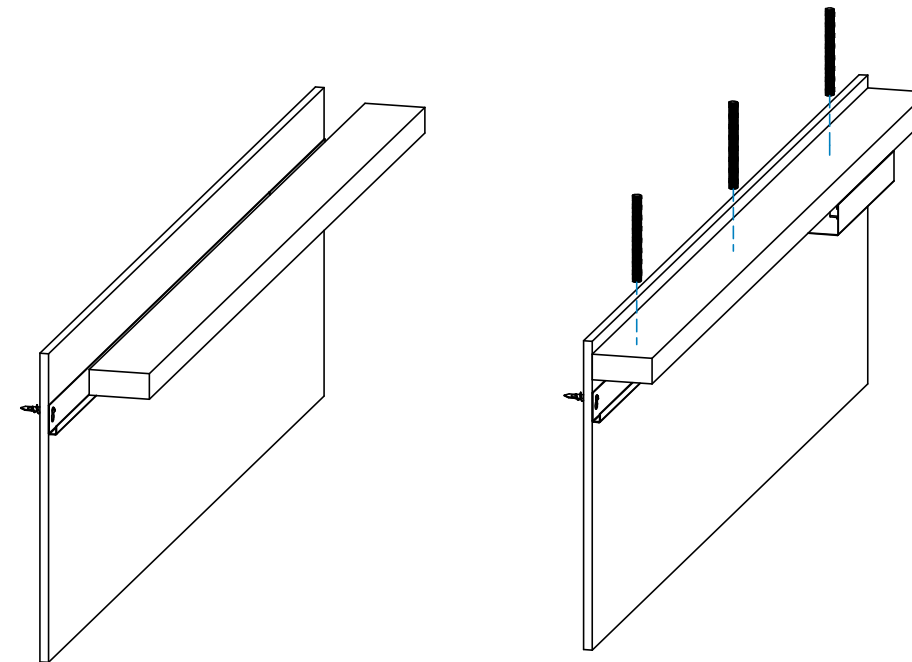
## Step 6a - Prepare for Mounting (Threaded Rod Only)

### A. Remove Knockouts



- Remove the 1/2" knockouts on top of the main housing by gently prying up on them with a flat head screwdriver.

### B. Install 2x4 Support

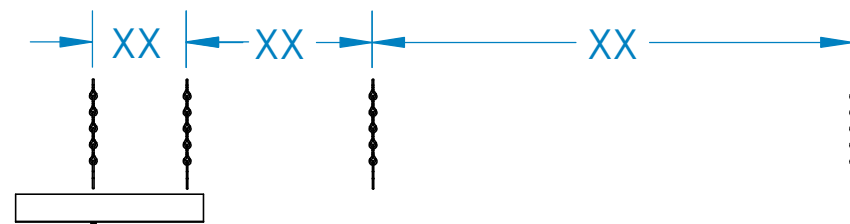


- Install the 2x4 stud (not provided) above the fixture, either offset from the wall or against the wall.
- Install the threaded rods (not provided) to the 2x4 stud at the mounting locations from Step 1.
- Ensure that the threaded rods will extend down far enough to insert inside the fixture.

# PRL-Telescoping Installation Instructions

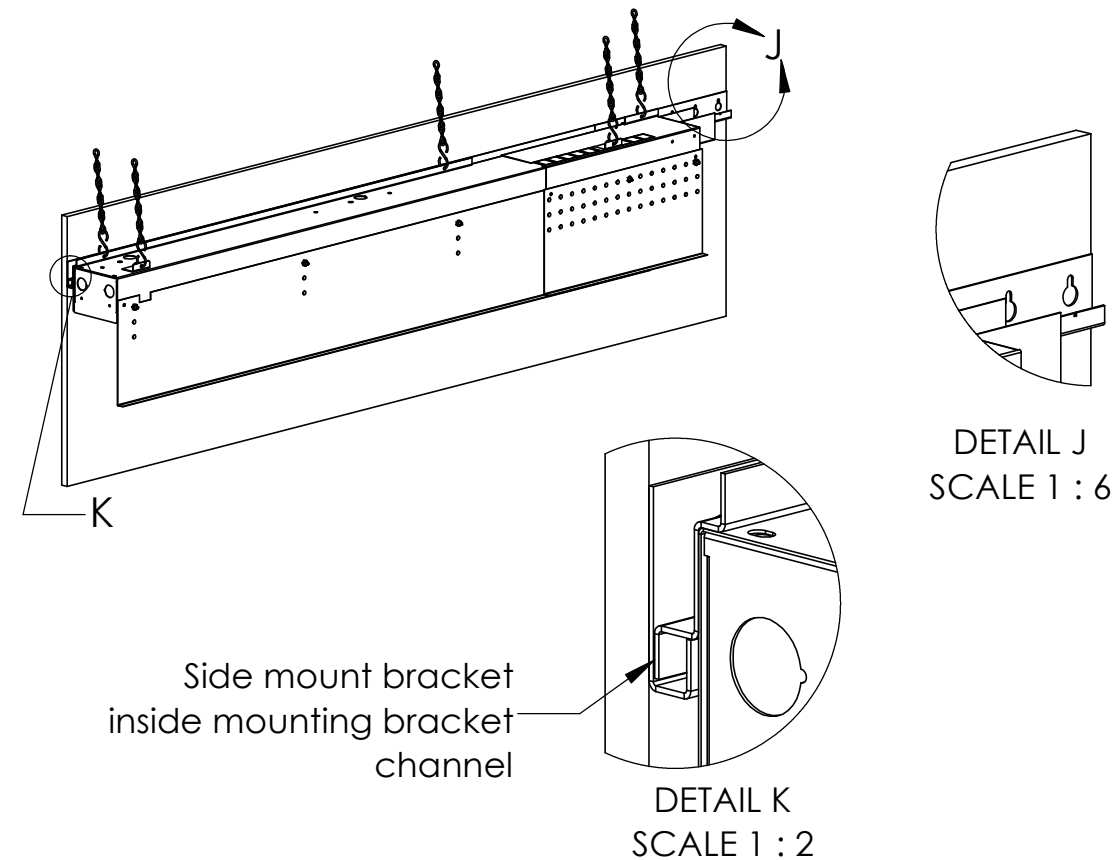
## Step 7 - Mount the Housings (Hook and Chain)

### A. Install Hanging Chains



- Install the provided hanging chains to the ceiling or a support structure above.
- Chains can be secured to ceiling or a stud using screws. If Unistrut or similar support structure is used, chains can be looped around support and linked.
- Ensure chains are secure before hanging housings.

### B. Hang the Housings



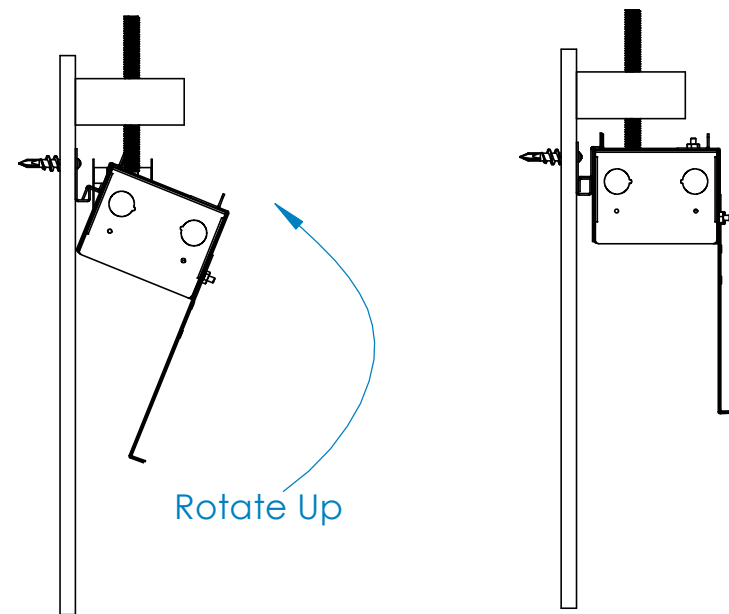
- Hang the housings from the installed chain hooks. Insert the hooks thru the holes of mounting brackets located on top of housings as shown in Detail J.
- After hanging the housings, insert the side mount brackets to the channel of each mounting bracket as shown inside Detail K.

**\*NOTE:** If mounting to threaded rods please skip this page and continue to next page.

## PRL-Telescoping Installation Instructions

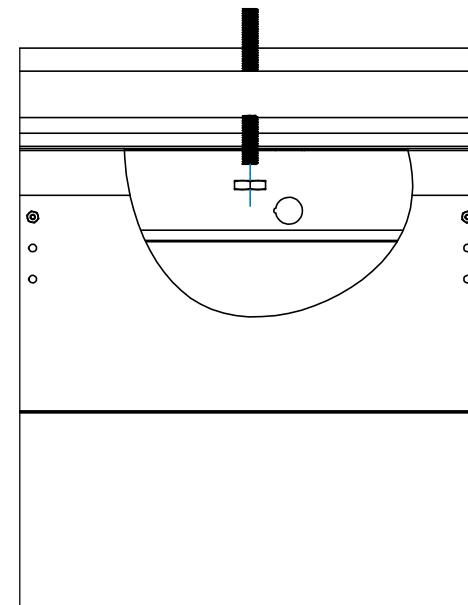
### Step 7 - Mount the Housings (Threaded Rod)

#### A. Install to Bracket and Support



- Install the housings to the wall brackets first, ensuring the lip of the brackets are overlapping.
- Next rotate the housings up and insert the threaded rods thru the knockouts removed in Step 6a.

#### B. Secure to Threaded Rods

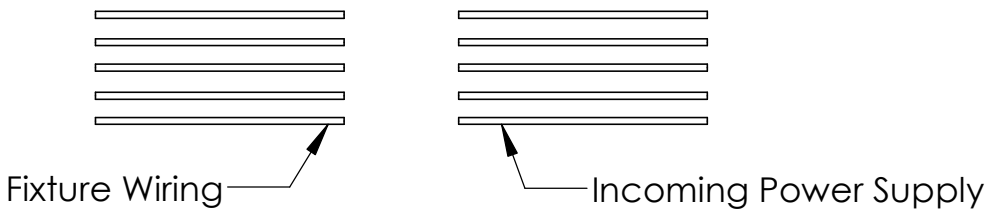


- Once the threaded rods are inserted to the fixture, use nuts to secure the fixture.
- If the support stud is offset from the top of the fixture, overtightening will tilt the fixture.

**\*NOTE:** The installation procedure for hook and chain mounted and threaded rod mounted fixtures is the same after this step.

**PRL-Telescoping** Installation Instructions  
**Step 8** - Install Fixture to Housings

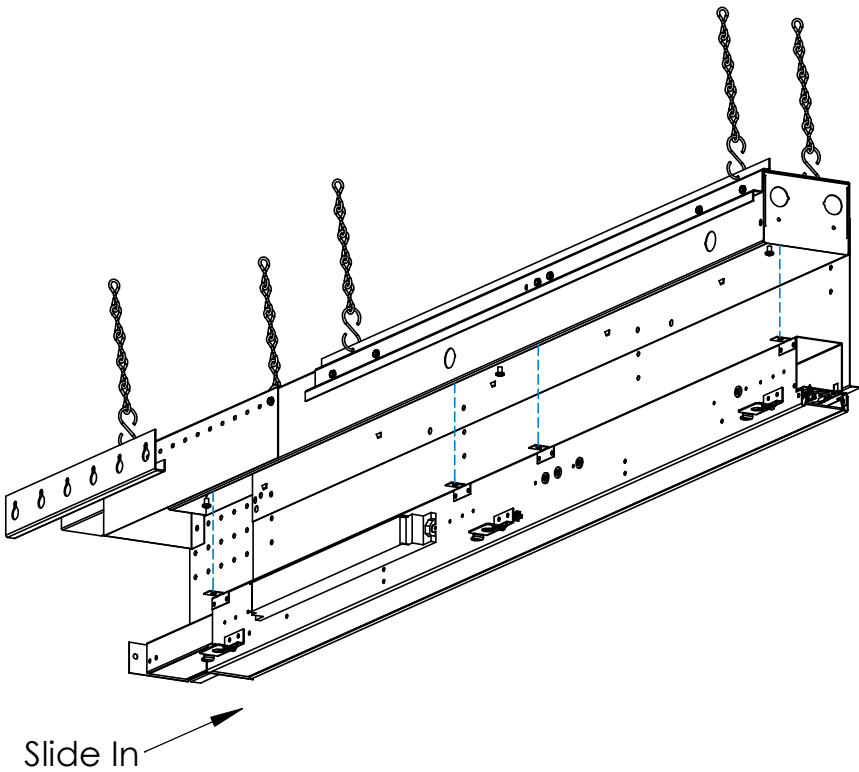
**A. Connect Fixture Wiring**



WIRING LEGEND		
BLACK	HOT	Line Voltage
WHITE	NEUTRAL	Line Voltage
GREEN	GROUND	
GRAY	DIMMING	0-10V DC
VIOLET	DIMMING	0-10V DC

- Wire fixture to the incoming power supply. For dimming option, refer to wiring legend above.
- Use UL approved connectors only. Follow all local, state and national codes.

**B. Install to Main Housing**

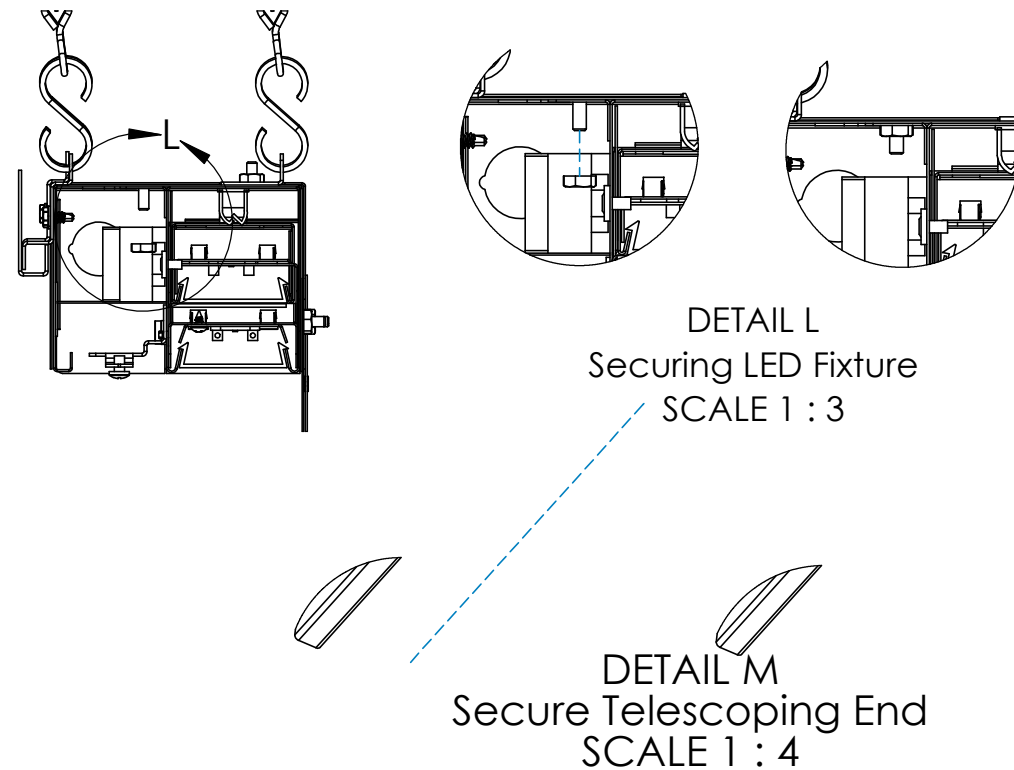


- Install the LED fixture to the main housing. Align the 4 brackets shown with the housing studs located inside the housing.
- LED fixture should NOT be pre-installed, and will 'click' into place when fully inserted.

## PRL-Telescoping Installation Instructions

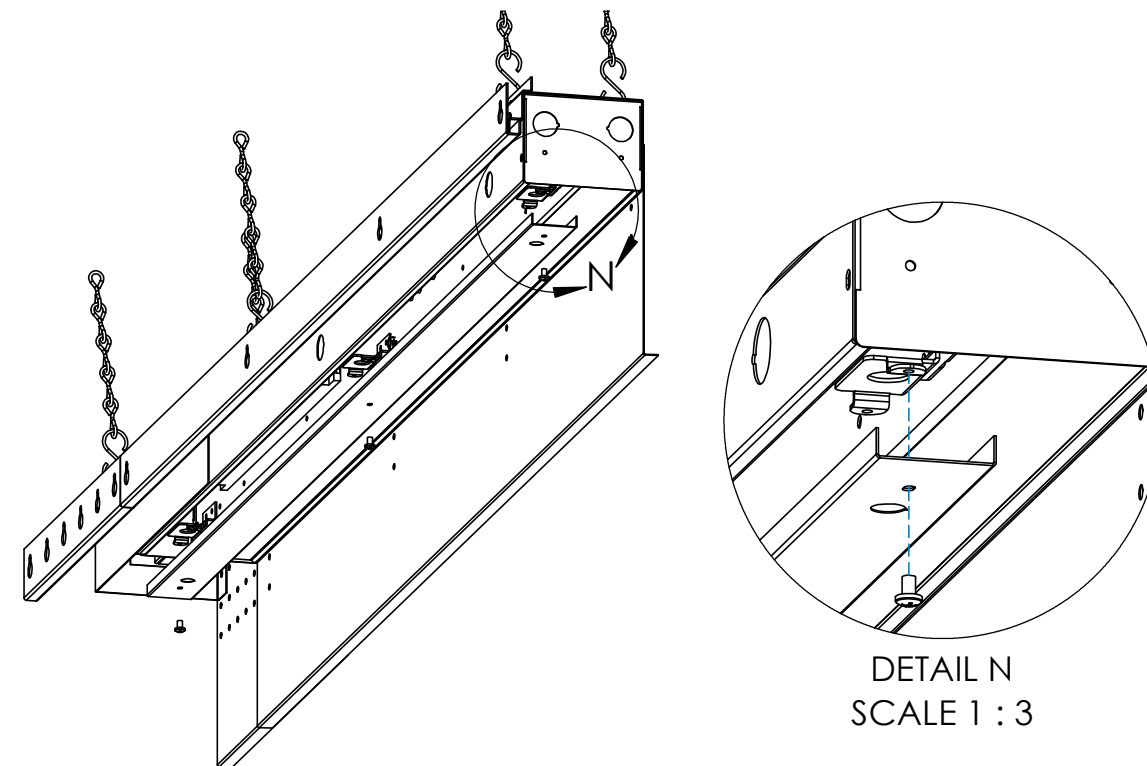
### Step 8 - Install Fixture to Housings (Cont'd)

#### A. Secure to Housing



- Secure the LED fixture and telescoping end to the respective studs using the provided nuts.
- Tighten the nuts 1/4 turn to fully secure.

#### B. Install Access Cover



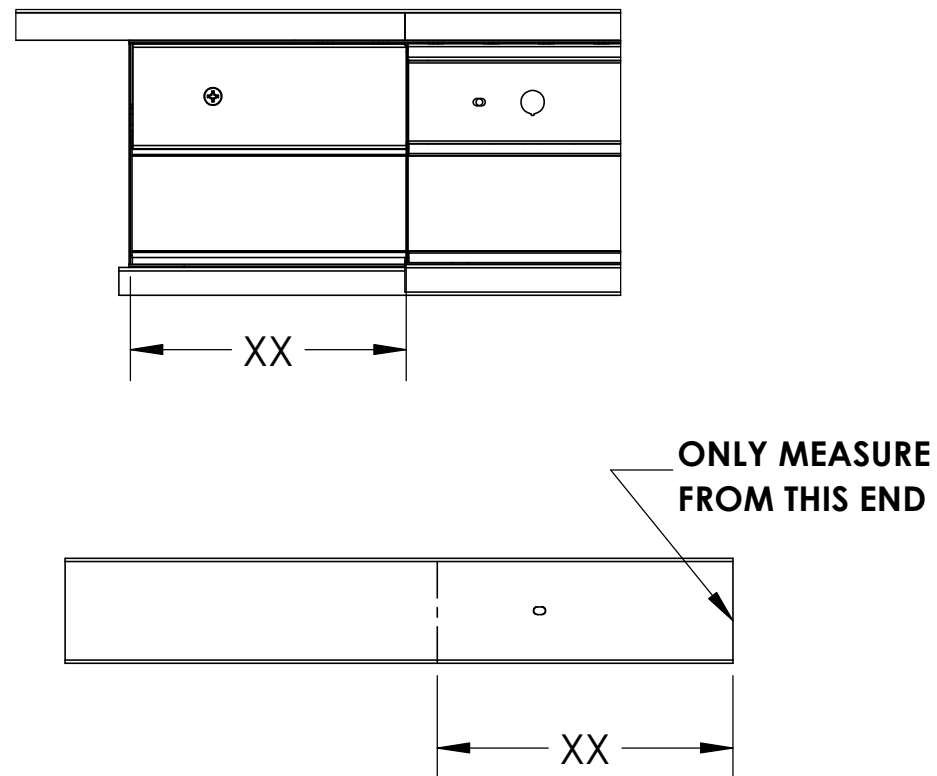
- Install the access cover to the fixture.
- Align the holes with the mounting points on the LED fixture and install provided screws to secure as shown in Detail N.
- Fixture installation is now complete. Drywall/surfacing materials can be attached to bottom lip of side panels and under mounting brackets.

# PRL-Telescoping Installation Instructions

## Step 9 - Install Cavity Cover (Optional)

### A. Measure Gap and Cut Cavity Cover

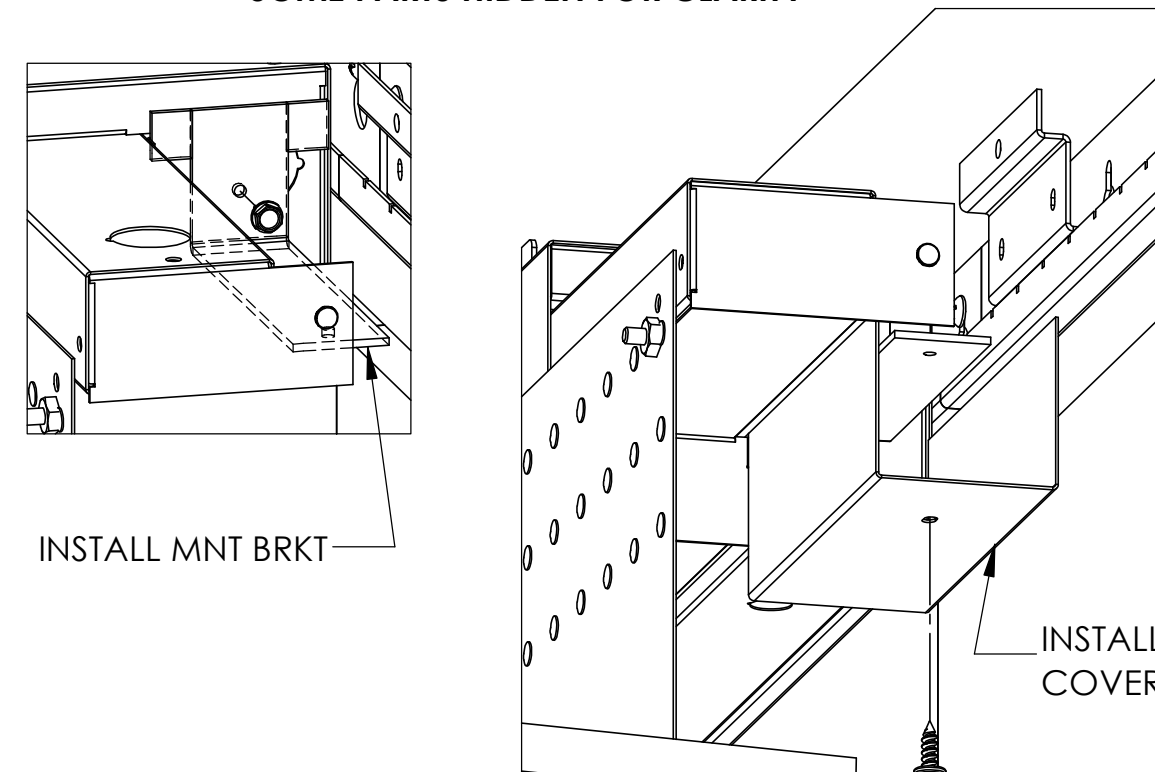
VIEW FROM UNDER TELESCOPING SECTION OF FIXTURE



- **NOTE: This step is optional and not required to complete fixture installation.**
- first measure the distance between the endcap of the standard end of the fixture and the inside of the telescoping section as shown above.
- Translate this measurement to the cavity cover and cut the cover to fit. Ensure that the cavity cover measured and cut starting at the end closest to the oblong.

### B. Install Cover to Mount Bracket

SOME PARTS HIDDEN FOR CLARITY



- Install the mounting bracket to the endcap for the standard PRL housing section. Align the bracket to be centered in the depth of the cavity, with the bottom surface of the bracket approx. 1/32nd above the lens of the telescoping section.
- Drill a pilot hole into the endcap, then use a #8 screw to secure the mounting bracket to the endcap as shown.
- Next, align the cavity cover that has been cut to fit the gap of the telescoping section with the mount bracket. Use another #8 screw to secure the cavity cover to the mount bracket.