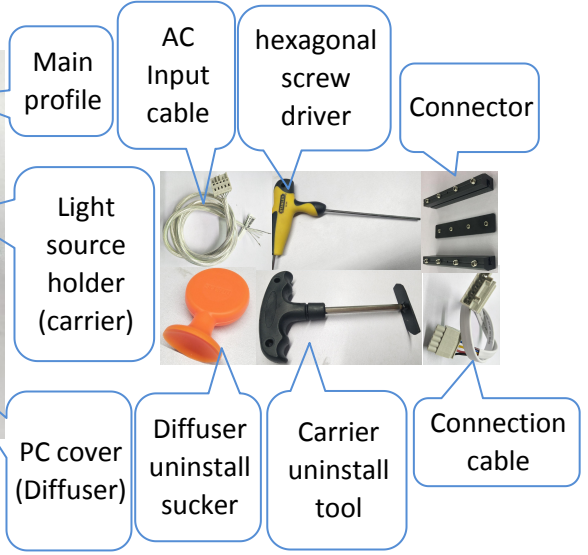
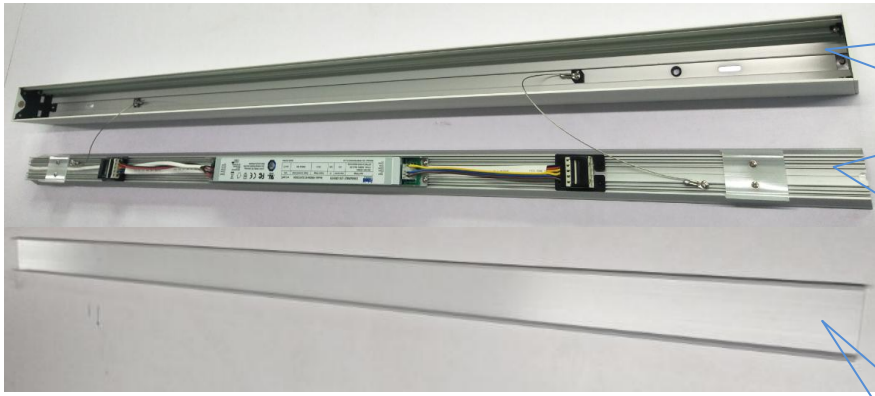


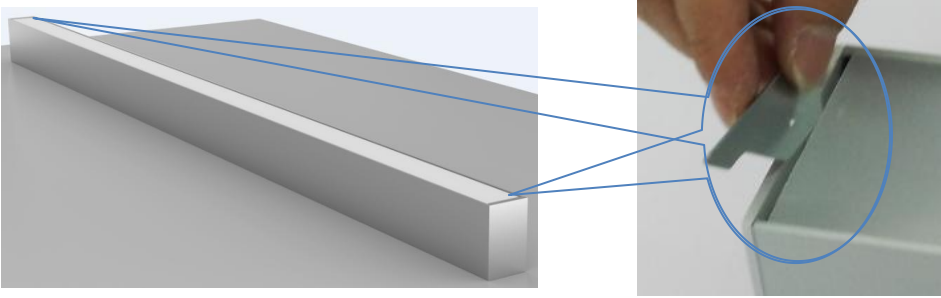
1. Components



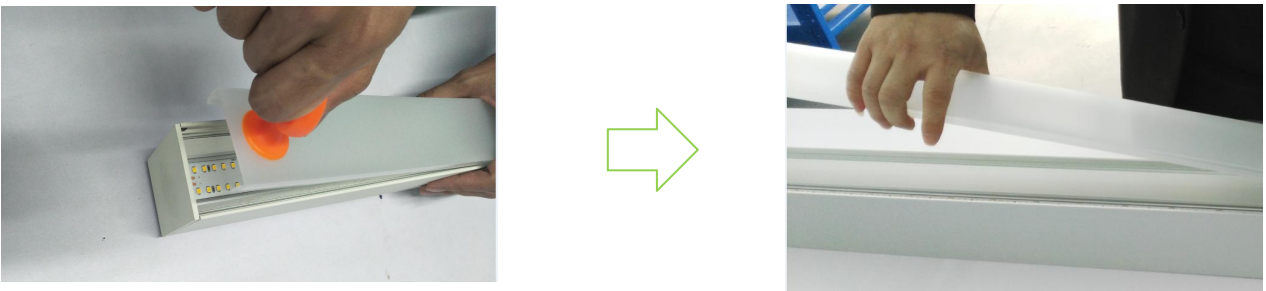
2. Installtion

A. Installation of continuous lighting fixture

A1. Take out anti-lightleak clips



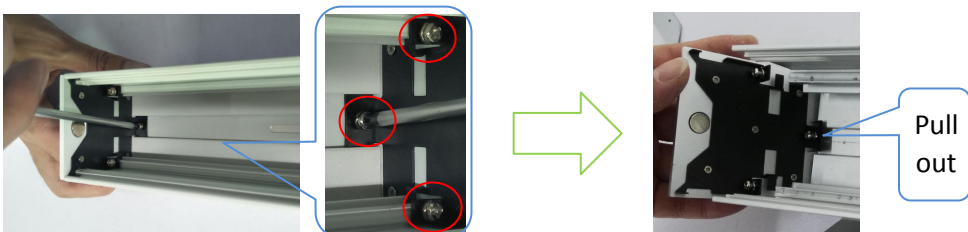
A2. Push sucker on diffuser, then pull up



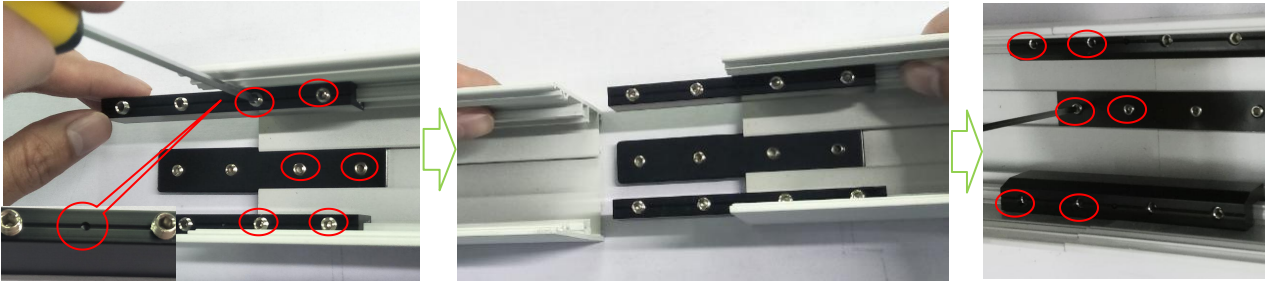
A3. Put carrier uninstallation tool into right position inside of carrier, then pull up



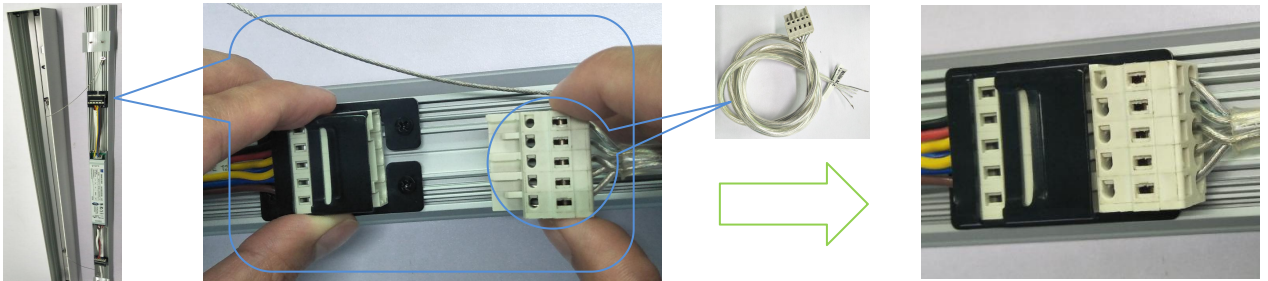
A4. Remove end-caps of linear light fixtures which need to be connected (note: the end-cap of AC input side of first linear light and the end cap of last one not need to be removed)



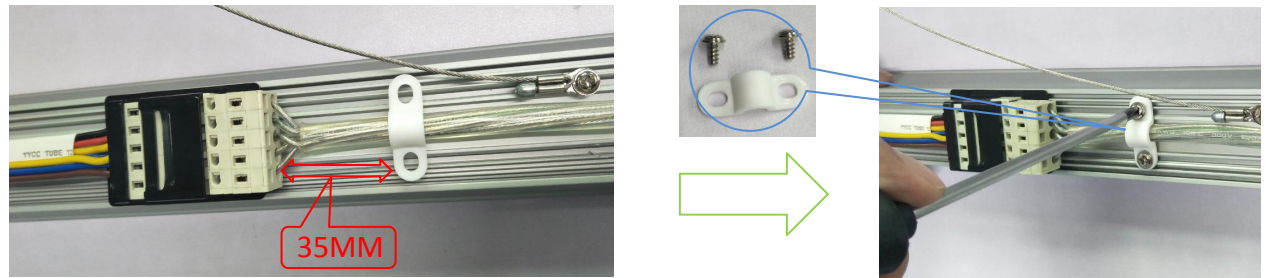
A5. Fixed connectors



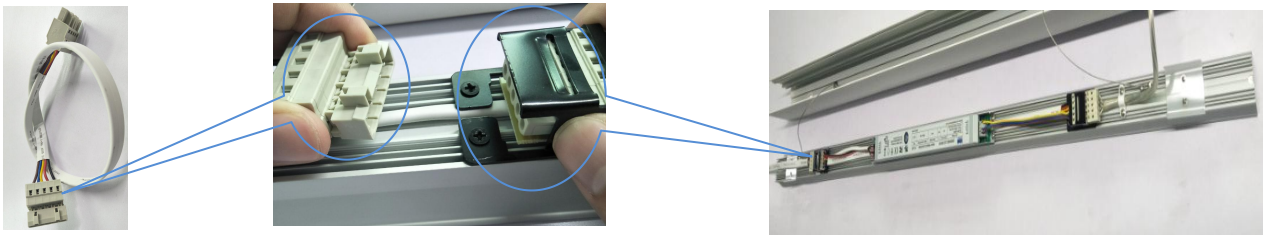
A6. Connect male-connector to female connector on carrier



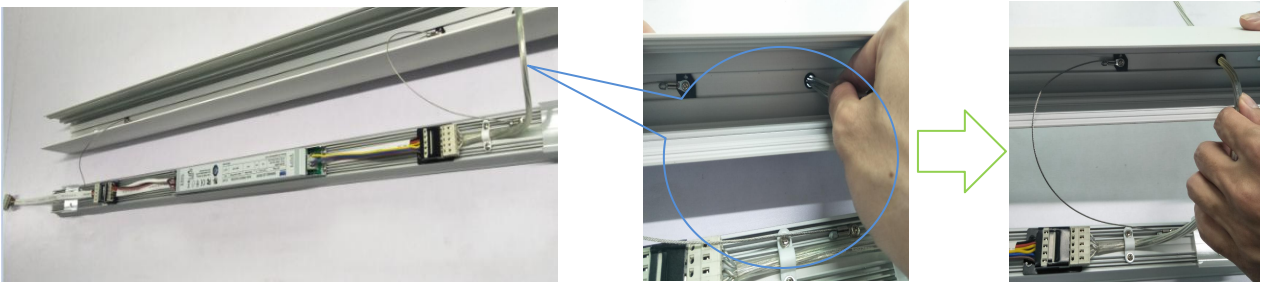
A7. Fixed AC input cable



A8. Connect the female-connector to male-connector which has been fixed on the carrier on first linear light



A9. Pass AC input cable through the hole on main profile



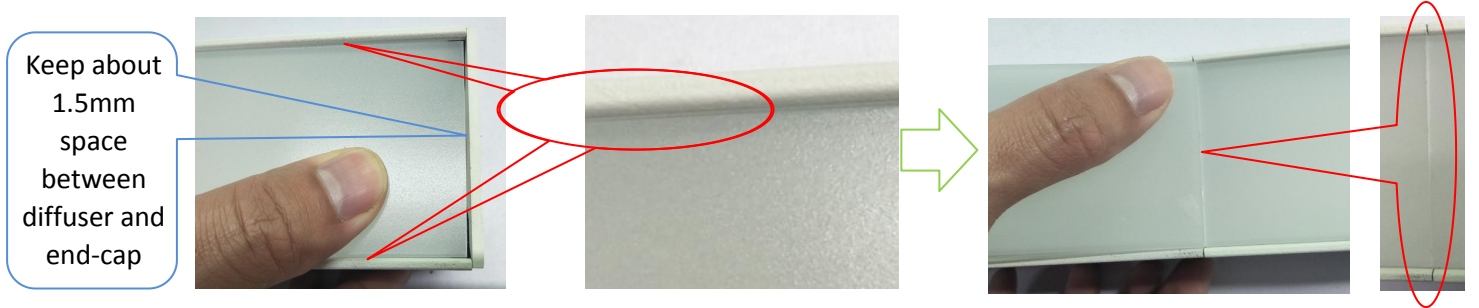
A10. Put one side of carrier on right position inside of main profile, then press carrier



A11. Connect connectors, then finish step A10 for each connected linear light



A12. Install diffusers (Keep about 1.5mm space between diffuser and end-cap on last two ends)



A13. Put anti-lightlead clips in the space between diffuser and end-cap, finish light fixture installation

