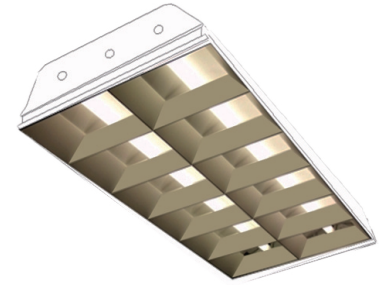




Texas Fluorescents
Reinvented

PEW/PES 2x4 ft.

Direct/Indirect, Center diffuser,
Grid Mount



FEATURES & SPECIFICATIONS

INTENDED USE

High Efficiency Parabolic is a breakthrough in LED combining the comfortable distribution of light associated with a standard parabolic. Available in a choice of 2" white or semi-specular louvers in a shallow body less than 4" deep. The white louver give the luminaire a broad light distribution that evenly illuminates all surfaces in the space, which create a comfortable balanced brightness for the occupants.

SIZE W x L x H in inches (mm)

22.65W x 46.75L x 3.7H

MATERIALS & FEATURES

Housing is die-formed and embossed code 22 gage steel. Luminaire body finish is high reflectance baked white enamel, with matte white reflectors. Wiring knockouts are provided on the back of housing. Center diffuser snaps into place; no tools are required for removal. Diffuser is perforated to maintain even brightness, and provided with an internal, acrylic overlay to obscure lamps.

MOUNTING

Recessed inverted T-Bar ceilings. Grid mount.

TYPICAL OPTIONS AND ACCESSORIES

Emergency ballasts, whips, and lenses. See options page at the end of the T02Grid section, or contact factory for more details.

ORDERING INFORMATION

Example: PEW18C24LF32W3450LDMV40K

PEW	18C	24L	F32W3450L	DMV		
Series		Size	Wattage and Lumen	Driver	Color Temperature	
PEW (Parabolic White Louver) PES (Parabolic Semi-Specular Louver)		24L 2 x 4	F32W3450L 32 System Watts, 3450 Delivered Lumens F48W4800L 48 System Watts, 4800 Delivered Lumens F57W5400L 57 System Watts, 5400 Delivered Lumens	DMV 0-10V Dimming *Field installed-Dimming Wire DMVFID 0-10V Dimming *Factory installed-Dimming Wire	30K 3000K 35K 3500K 40K 4000K 50K 5000K	
LOUVER CELL COUNT & MATERIAL					Options	
12C (12 cell (2x6 pattern) semi-specular, 2 in. nominal) 18C (18 cell (3x6 pattern) semi-specular, 2 in. nominal)					WP 6ft whip, 3/18ga WP10 6ft whip, 4/18ga EM Go gti gpe {"dcrcuv"*****	

Catalog Number:
Notes: