

## Illuminator High Bay Series LHB Series

Introducing our LED industrial high bay fixtures styled to match conventional HID high bays. These fixtures not only provide great glare free, wide area lighting; but also provide a stylish and modern industrial look. High purity aluminum alloy material and fin type radiator not only reduce weight for ease of installation but improve heat dissipation with excellent thermal conductivity and fast cooling. Unlike conventional HID high bays, these LED fixtures provide very low lumen depreciation and high light purity. These LED High Bays are available in 3 wattage/lumen packages with a choice of a 45 degree beam angle aluminum dome reflector or 90 degree beam aluminum dome reflector. Consult for other reflector options. LED life span is 50,000 hours with five year warranty. The housing color is silver.



Shown with Frosted Acrylic Lens, add "FR"

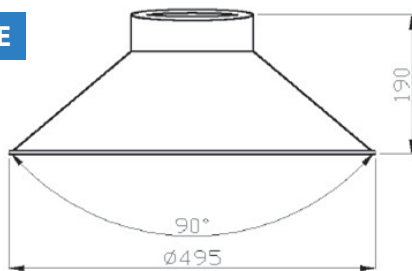
### FEATURES AND CHARACTERISTICS

- Multi-Volt 120V – 277V (50/60HZ)
- Color Temperature 5000
- Wattage/Lumens:
  - 60W – 4650 Lumens;
  - 100W – 9950 Lumens;
  - 150W – 13,500 Lumens
- Weigh Less than 14 lbs
- CUL listed
- 50,000 hour life
- 5 Year Warranty
- CRI > 75
- Cree XMLR LED's
- Made in China

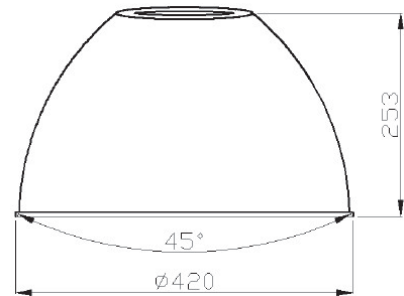
### ORDERING INFORMATION

Item No.	Description	Size
LHB60W/MV50KCONE	LED HIGH BAY LHB 60W MV 50K 90^ REF	19"Dia x 7.5"H
LHB60W/MV50KDOME	LED HIGH BAY LHB 60W MV 50K 45^ REF	16.5"Dia x 10"H
LHB100W/MV50KCONE	LED HIGH BAY LHB 100W MV 50K 90^ REF	19"Dia x 7.5"H
LHB100W/MV50KDOME	LED HIGH BAY LHB 100W MV 50K 45^ REF	16.5"Dia x 10"H
LHB150W/MV50KCONE	LED HIGH BAY LHB 150W MV 50K 90^ REF	19"Dia x 7.5"H
LHB150W/MV50KDOME	LED HIGH BAY LHB 150W MV 50K 45^ REF	16.5"Dia x 10"H

### ALUMINUM LAMP SHADE



A1 Lampshade A

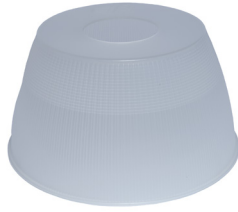


A1 Lampshade C

**ACRYLIC REFLECTORS**



**Clear Dome  
(CL)**



**Frosted Dome  
(FR)**



**Faux Alabaster Dome  
(AL)**

**GENERAL DESCRIPTION**

The LED Grade Acrylic S16 is a remote optic intended for use with POD style LED highbays and induction sources. Unlike traditional reflectors, the S16 is shallow so as to allow high beam angles. Its large flat top allows it to be easily adapted to most any fixture without the need for expensive collars. The lower flange mimics traditional reflectors allowing for a wide range of bottom lenses and standard clamp bands.

**FEATURES AND BENEFITS**

- Standard clear acrylic version is cost effective and provides a traditional yet low profile appearance
- Interface® version yields high down light efficiency and a gentle glow for maximum brightness control
- Accommodates standard 16" diameter lenses including the Model 350-361 Drop Lens, 816 Conical Drop Lens and flat lenses. Bottom lenses are primarily for low bay applications where brightness control is paramount. Bottom lenses also enhance uplight.

**DIMENSIONS**

9"H X 16" Dia

**ACCESSORIES/OPTIONS**

- 816 Conical Drop Lens
- 816 Smooth Flat Lens
- 816 Clamp Band
- 816 Wire Guard
- 350-361 Tapered Drop Lens