



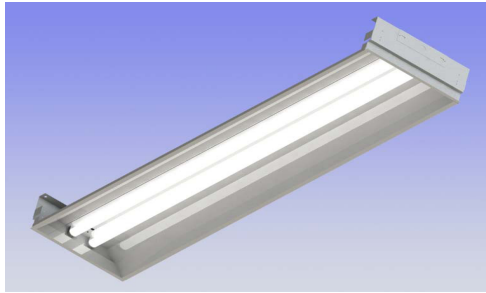
Texas Fluorescents
Reinvented

ITB-X1 SERIES

Linear Recessed Channel



SG
Inside



Saylite's ITB series is a cost effective recessed channel that provides enhanced lighting over both a typical troffer and a strip fixture. This light provides comfortable, glare free lighting with enhanced light output. Available for individual or continuous run design, ITB is popular in mass merchandising, large space applications where lots of light is a must at value pricing. It will provide more light down at the merchandise level. The X1LED recessed strip fixtures utilize efficient LED T8 lamps that provide high lumen output with efficient energy savings. Since they don't require any ballast or driver the only component that will ever need changing is the LED T8 lamp. The lamps are warranted for five years. Unlike recessed strip fixtures that utilize LED arrays and drivers these fixtures have the flexibility to change wattage, lumens, and color temperature simply by changing the lamps without the need to call a licensed electrician.

LAMP

2 lamp positions

CONSTRUCTION

One-piece housing/reflector assembly is die formed from code gauge cold rolled steel. Full end plates, securely riveted into place, close off the trough assuring rigidity and straight rows. Wiring compartments are open end-to-end allowing easy wire-through. Access plates are provided at each end to quickly close off at row ends. A quarter-turn cam fastener, locks closed each embossed 4Ft. ballast cover closing off the wiring compartment.

MOUNTING

For recessed mounting in all T-grid ceiling types, 1" or 9/16" grid sizes. Preferred ceiling to have main tees on one-foot centers with cross tees at 4Ft. or 8Ft. spacing depending on modules used. All units are designed for individual or row mounting; no additional parts needed. Each full end plate has auxiliary suspension points to facilitate supporting to permanent building structures.

SIZE W x L x H in inches

11.71" x 47.96" x 5.45" or 11.71" x 95.92" x 5.45"



X1 LED

The most economical, practical and user friendly series of LED fixtures with the energy savings, quality of light, long life and hassle-free maintenance. X1 LED fixtures are UL Listed with the latest LED T8 Bypass lamps. Fixtures provide over 44% energy savings over comparable fluorescent fixtures utilizing less expensive fixtures than the fluorescent version (no ballast required) and have flexibility to change wattage and color temperature any time. Fixture performance will evolve over time with the evolution of the T8 LED lamp technology. Concerned about maintenance with an LED array and driver fixture, X1 LED solves that by utilizing a self contained LED lamp that fits into fixture just like a fluorescent lamp.

Lamp Specifications:

Our T8 LED lamps are available in 2 or 4 ft sizes in different wattage, lumens and color temperature options. Savegreen Lighting is a premier supplier of LED T8 lamps and makes a variety of Bypass T8 lamps to meet the needs of your special application. Options include more energy efficient 12W, 15W and 17W lamps with Premium 10 Year warranty as well as high output options up to 3500 lumens. Double ended LED T8 lamps are also available. See lamp options and specs at www.savegreenlighting.com.

Optional Dimming Options:

The 4 FT lamps are available with two dimming options; Specially designed dimming lamps require an external driver that runs 1 or 2 lamps. So more than 2 lamps require multiple external drivers or Consult for Bypass Type B lamps that can be dimmed without any external driver and dim with standard 2 wire dimming. See dimming options and specs at www.saylite.com.

Emergency Options:

The standard X1 LED Lamps require an inverter or an All-in-one emergency kit that includes LED array, battery and driver. Dimmable T8 LED with external driver works with standard LED EM. For a 5 watt inverter that is similar to adding a 500 Lumen emergency in a conventional fluorescent fixture, add "INV5W" to the end of the item number. This will allow 5 watts of one lamp to work in emergency mode. Or add "EMKT12" to the end of the item number to get a 12W stand alone emergency kit in the fixture that comes with a driver, battery and small LED array that works in Emergency mode. See emergency options and specs at www.saylite.com.



Saylite, Texas Fluorescents Revisited

2055 Luna Rd. Suite 142 Carrollton, TX 75006
Phone: 972-247-3171 Fax: 972-247-0200
www.saylite.com email: sales@saylite.com

Catalog Number:
Notes:

Ordering Options

(Fixtures below include LED T8 Lamp LT8ABP48L18W2250LXXK. For Other Lamp Options See below and Replace LNXXX with short code below. Specify without Lamps by removing LNXXX)

ITEM NO.	DESCRIPTION
ITB132X1LI18W40	4ft. Industrial 2250 Lumen 1x18W LED T8 4000K Lamps Included
ITB232X1LI18W40	4ft. Recessed Linear 4500 Lumen 2x18W LED T8 4000K Lamps Included
ITB1328X1LI18W40	8ft. Tandem Recessed Linear 4500 Lumen 2x18W LED T8 4000K Lamps Included
ITB2328X1LI18W40	8ft. Tandem Recessed Linear 9000 Lumen 4x18W LED T8 4000K Lamps Included
ITB159X1	8ft. Recessed linear made for single pin 8ft. LED lamp
ITB259X1	8ft. Recessed linear made for single pin 8ft. LED lamp

Change 40 to 35 or 50 for different Kelvin. Change Lamp Wattage to 13W on 2FT or 15W on 4FT

For 5W Emergency, Add INV5 at the End of Item Number for KEMRGLED5500AC. See other options at www.saylite.com
 For fixtures wired for double ended lamps, change X1 to X2 and see the Savegreen Lamps below for the proper Double Ended Lamp.
 For fixtures without lamps included, remove the "LNXXX" at the end of the item number and have X1 or X2 for Single or Double Ended wiring.

<p>LN18W40 - Lamp Specification 50,000 Hour Life with 5 Year Warranty Beam Angle 140 Degree Aluminum Base and Aluminum Housing with Glass Cover Operating Temperature: - 20C to 50C Color Temperature: 3500K, 4000K, 5000K G13 Pins (Same as Fluorescent Linear T8 Bipin) AC100 – 277V without Ballast Single Ended or Double Ended Power (If not specified use X1 Single Ended Power)</p>

Savegreen T8 or T5 LED Lamp Options

To include one of these lamps in fixture, remove "LNXXX" and add Savegreen Inside code below.

(See www.savegreenlighting.com for specification sheets or more information on these lamp options.)

VERSION	SAVEGREEN INSIDE	SAVEGREEN ITEM NO.
Popular	SGB15W35	LT8BG48L15W1740LXXK
Standard	SGS29W35	LT8BGC24L9W1050LXXK
Standard	SGS312W35	LT8BGC36L12W1200LXXK
Standard	SGS15W35	LT8BGC48L15W1740LXXK
Premium	SGP12W35	L10T8BGC48L12W1750LXXK
Premium	SGP15W35	L10T8BGC48L15W2000LXXK
Premium	SGP18W35	L10T8BGC48L18W2500LXXK
High Output	SGH26W40	LT8BGC48L26W3500LXXK
Double Ended	SGD18W35	LT8BDGC48L18W2100LXXK
T5HO	SGT525W40*	LT5BG46L25W3300LXXK
Magic	SGM18W35K	LT8ABP48L18W2250LXXK
Magic	SGM18W35K	LT8ABP48L15W1875LXXK
Magic	SGM215W35K	LT8ABP24L15W1875LXXK

Change 35 to 40 or 50 for different Kelvin.
 *For T5, CCT 40K and 50K available.



10-YEAR
WARRANTY

Saylite, Texas Fluorescents Revisited

2055 Luna Rd. Suite 142 Carrollton, TX 75006
 Phone: 972-247-3171 Fax: 972-247-0200
www.saylite.com email: sales@saylite.com

Catalog Number:
Notes: