



Texas Fluorescents
Reinvented

CATALOG#:

PROJECT:

TYPE:

Series CV800

LED Linear Vandal Resistant Wraparound (Damp Location)

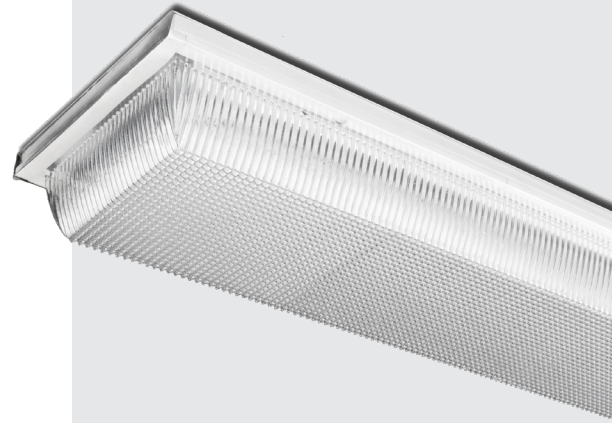
This Series CV800 ED wraparound fixture is designed for high-abuse areas, such as parking garages, correctional institutions, and school corridors. It features an injection-molded, UV-stabilized, 100% clear, polycarbonate diffuser with an internal prismatic pattern.

CONSTRUCTION

Back plate is die formed of 16 gauge steel. Lens attaches to back plate with tamper-resistant stainless steel screws. Knockouts are present on the back for all connections and through wiring.

MOUNTING

Units may be surface or wall mounted.



DIMENSIONS

50.56"L x 9.15"W x 4.5"H

FEATURES & BENEFITS

- Suitable for dry or damp locations
- Many lumen package / wattage options via programmable drivers
- Multiple color temperatures available (3000K, 3500K, 4000K, 5000K); Consult factory for RGBW options
- Emergency battery backup options available
- CRI >80 standard, 90 optional
- L70: >50,000 Hours
- Dimming: 0-10V 120-277V standard, 120V ELV/TRIAC optional
- Power factor >0.90
- 5 year warranty



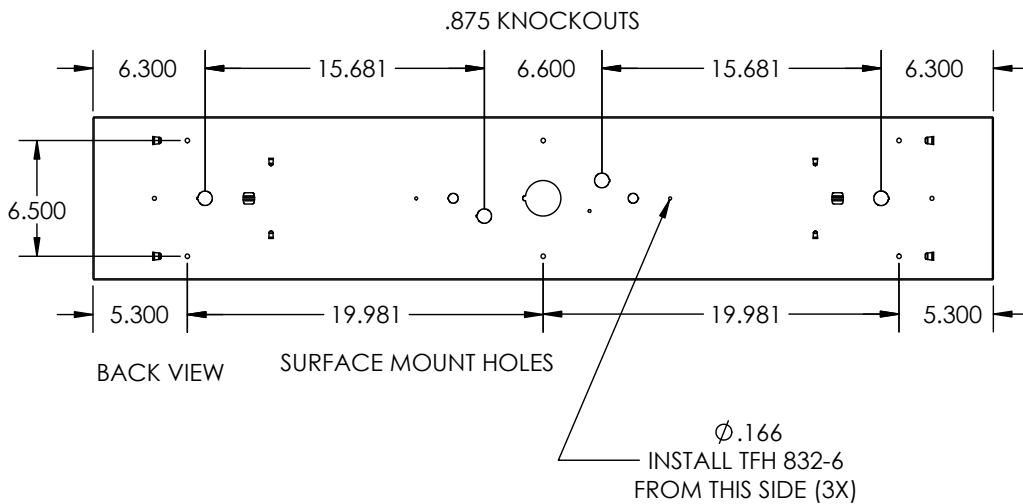
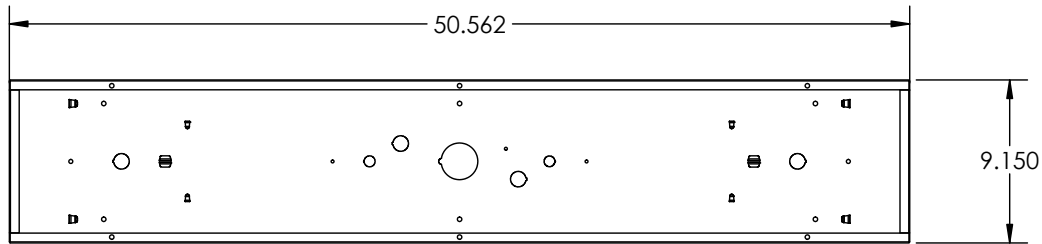
ORDER INFORMATION

Factory at your fingertips. Fill in the blanks to create your part number or create a custom configuration.
W L

SERIES	WATTAGE* & LUMENS*	DRIVER	COLOR	CRI**	FINISH	OPTIONS	
CV800	J48W4800L	48 Watts 4800 Lumens	DMV	0-10V Dimming	30K 3000K	Blank 80 CRI	EM 10W Emergency battery backup (remote only) EM12 12W Emergency battery backup (remote only) EM20 20W Emergency battery backup (remote only)
	Z72W7200L	72 Watts 7200 Lumens	G120	ELV/TRIAC Dimming at 120V only	35K 3500K	90 90 CRI	
			D1MV	0-10V Dimming (dim to 1%)	40K 4000K		
					50K 5000K		

DRAWINGS & IMAGES

Back



Note:
*Programmable LED drivers allow custom configured wattages and corresponding lumens.
** Consult factory for 90 CRI 5000K availability.
We reserve the right to change design, materials, LEDs and finish in any way that will not alter installed appearance or reduce function and performance.