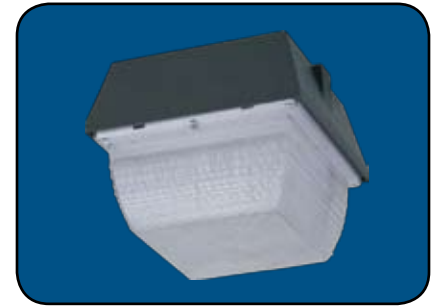


## CV200 Series 8 x 8 Ceiling Fixture



### FEATURES & SPECIFICATIONS

#### APPLICATIONS

Parking areas, entrances, walkways, underpasses, loading docks, and recreation areas.

#### SIZE W x L x H in inches (mm)

9.0W x 9.0L x 7.50Dp

#### LAMP

- 70 Watt Metal Halide
- 70 Watt High Pressure Sodium
- 100 Watt High Pressure Sodium
- (1) 26 Watt Plug In Fluorescent
- (1) 42 Watt Plug In Fluorescent

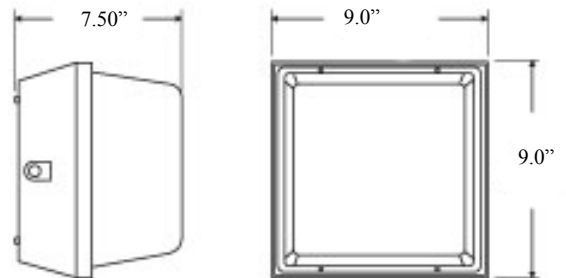
#### MATERIALS & FEATURES

Heavy duty die-cast aluminum powder coating construction  
High impact polycarbonate lens  
One piece anodized aluminum designed reflector for best light efficiency.  
Silicone rubber included to prevent any leakage from the outside  
1/2" tapped holes available for installing photocell (optional)  
Infield installable directional indicators.

#### LISTING

UL Listed for wet locations for ceiling and wall mounting

#### DIMENSIONS



### ORDERING INFORMATION

Example: CV200-PL42-MV-LP

