

# 8RB Series

96 in. LED Retrofit Kit

## FEATURES & SPECIFICATIONS

### INTENDED USE

LED 8' Retrofit Ballast Cover Kit. Now, it is easier than ever to upgrade your existing Strip Fixtures with LED Lighting. Simply remove the existing Fluorescent Lamps and Ballasts and use the New Ballast Cover Kit. Installation becomes quick and simple. The LED Ballast Cover is engineered with the latest LED arrays and drivers. There are so many options to choose from based upon your lighting requirements. See Ordering Information below for wattage and lumen output offerings.



### CONSTRUCTION:

Material is die-formed 22 gage steel, with high reflectance baked white enamel finish.



## ORDERING INFORMATION

### STANDARD

Example: **8RB421F48W4800LDMV40K**

8RB		421		F48W4800L		DMV		40K	
Series		Width		Wattage and Lumen		Driver		Kelvin Temperature	
<b>8RB</b>	96 in.	<b>421</b>	4.25 in.	<b>F32W3450L</b>	32 System Watts, 3450 Delivered Lumens	<b>DMV</b>	0-10V Dimming	<b>30K</b>	3000K
		<b>501</b>	5.00 in.	<b>F48W5650L</b>	48 System Watts, 5650 Delivered Lumens			<b>35K</b>	3500K
				<b>F97W11300L</b>	97 System Watts, 11300 Delivered Lumens			<b>40K</b>	4000K
				<b>F114W12800L</b>	114 System Watts, 12800 Delivered Lumens			<b>50K</b>	5000K
				<b>F118W15500L</b>	118 System Watts, 15500 Delivered Lumens				

\* Consult for more options

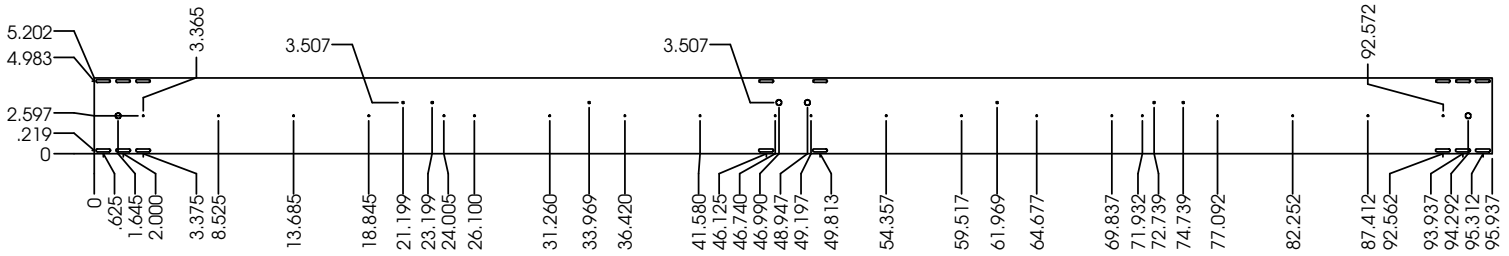
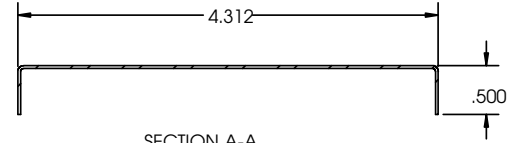
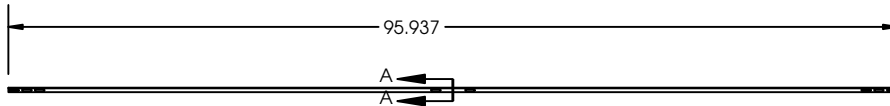
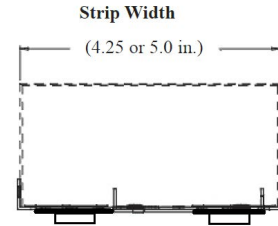
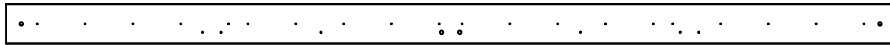
Catalog Number:
Notes:

# 8RB Series

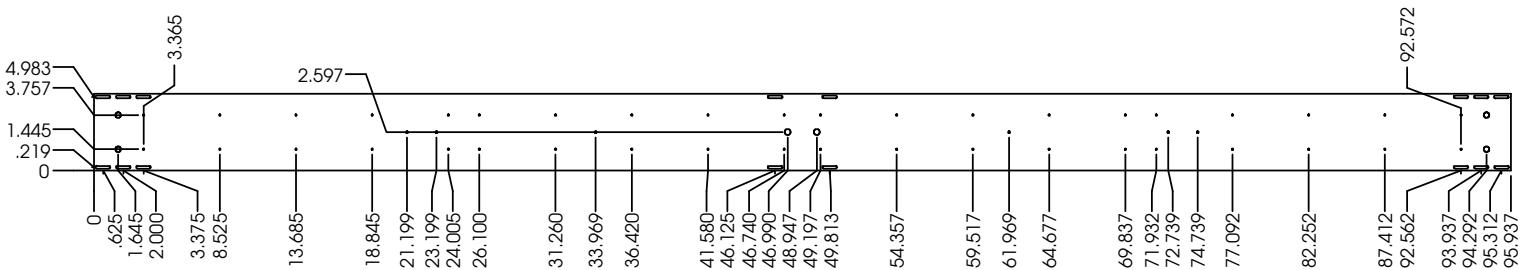
96 in. LED Retrofit Kit

## DIMENSIONS

All dimensions are inches. Specifications subject to change without notice.



1 Row LED boards



2 Rows LED boards



Catalog Number:
Notes: