



Texas Fluorescents
Reinvented

CATALOG#: _____
PROJECT: _____
TYPE: _____

Series 66

LED Linear Pendant 6" X 6" (Direct and Indirect; Direct or Indirect)

This spec-grade geometric (6" X 6" as either Direct and Indirect, or one or the other) fixture is ideal for general or perimeter lighting applications where a bolder size is required and can be installed individually or in group patterns. Specially designed for dedicated direct light, indirect light or both (indirect allows a snap-in lens to hide the lamps or LED arrays). Ideal for corridors, lobbies, and office areas, etc.

CONSTRUCTION

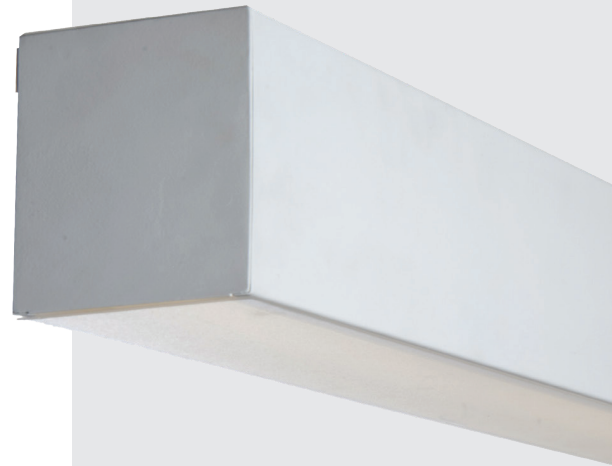
Die-formed and welded 22-gauge cold-rolled steel. Knockouts on ends allow continuous wireway mounting. Housing is specially designed for direct and/or indirect lighting with separating compartments for each.

DIFFUSERS

Fixture accepts various lenses or louvers.

TYPICAL OPTIONS & ACCESSORIES

Cord sets, whips, occupancy sensors, hanging kits, wire guards. Emergency battery backup options available. Contact factory for more details.



DIMENSIONS

4ft. - 48"L x 6"W x 6"H

8ft. - 96"L x 6"W x 6"H

Custom lengths available; contact factory


FEATURES & BENEFITS

- Pendant mounted; can also be surface, recess or wall mounted
- For individual use or lined up in a continuous row, resulting in a clean line of light
- Recommended for commercial & residential applications
- Custom finishes available; contact factory
- CRI: >80 standard, 90 optional
- L70: >50,000 Hours
- Dimming: 0-10V 120-277V standard, 120V ELV/TRIAC optional
- Several Kelvin temperature options (3000K, 3500K, 4000K, 5000K)
- Emergency backup options available
- Power Factor: >0.90
- Suitable for damp and dry locations
- 5-Year Warranty



ORDER INFORMATION

Factory at your fingertips. Fill in the blanks to create your part number or create a custom configuration.

SENSOR	SERIES	LENS MATERIAL	LENGTH	W		L		DRIVER		COLOR		
				WATTAGE*	LUMENS*	WATTAGE*	LUMENS*	DRIVER	DRIVER	30K	35K	40K
SS Sensor - On/Off SV Bi-level (xx) SD Daylight Harvesting 	66W Wall Mount	MW Matte white lens (Only available for downlight)	24L 24"	Up & Down				DMV 0-10V Dimming	0-10V Dimming	30K	3000K	
				UR6WD12W	Uplight 6 Watts Downlight 12 Watts 3600 Lumens	G120 ELV/TRIAC dimming at 120V only (only available with SS sensor)						
				UR9WD18W	Uplight 9 Watts Downlight 18 Watts 5400 Lumens							
				Up or Down Light Only								
				R12W1200L	12 Watts 1200 Lumens							
				R24W2400L	24 Watts 2400 Lumens							
	66P Pendant Mount	SF Snap-in frosted acrylic lens (85% transmission) Special for LEDs; only available for uplight and downlight	48L 48"	Up & Down					D1MV 0-10V Dimming (dim to 1%)	DMV(xx) 0-10V Dimming (xx) for percentage of light output when not occupied. (required for SV sensor)	0-10V Dimming (dim to 1%)	35K
				UR12WD24W	Uplight 12 Watts Downlight 24 Watts 3600 Lumens							
				UR18WD36W	Uplight 18 Watts Downlight 36 Watts 5400 Lumens							
				Up or Down Light Only								
				R24W2400L	24 Watts 2400 Lumens							
				R48W4800L	48 Watts 4800 Lumens							
96L 96"			Up & Down									
			UR24WD48W	Uplight 24 Watts Downlight 48 Watts 7200 Lumens								
			UR36WD72W	Uplight 36 Watts Downlight 72 Watts 10800 Lumens								
			Up or Down Light Only									
			R48W4800L	48 Watts 4800 Lumens								
			R96W9600L	96 Watts 9600 Lumens								

Additional Options

CRI**	FINISH	CONFIGURATIONS	OPTIONS
Blank 80 CRI 90 90 CRI	WH White BK Black SI Silver	Blank Individual B Beginner Run E Ender Run J Joiner	HC301WH Cable kit with 4' cable & 3 wires power feed/cable incl. and white canopy HC302WH Cable kit with 12' cable & 3 wires power feed/cable incl. and white canopy HC3015WWH Cable kit with 4' cable & 5 wires power feed/cable incl. and white canopy HC3025WWH Cable kit with 12' cable & 5 wires power feed/cable incl. and white canopy HC3016WH Cable kit with 4' cable & 6 wires power feed/cable incl and white canopy HC3026WH Cable kit with 12' cable & 6 wires power feed/cable incl and white canopy 2SCS24WH Two stem kits with 24" stem, canopy and mounting hardware for a 4' fixture EM 10W Emergency battery backup (internal, excludes less than 4ft) EM12 12W Emergency battery backup (internal, excludes less than 4ft) EM20 20W Emergency battery backup (remote only)

Note:

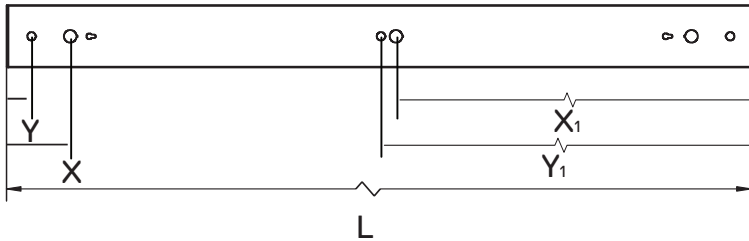
*Programmable LED drivers allow custom configured wattages and corresponding lumens.

**Consult factory for 90CRI 5000K availability.

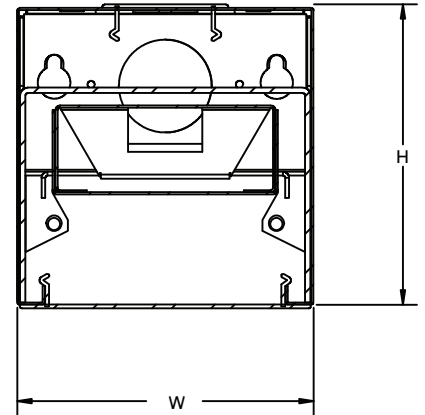
We reserve the right to change design, materials, LEDs and finish in any way that will not alter installed appearance or reduce function and performance.

DRAWINGS & IMAGES

PENDANT MOUNT



End Side View



PART	L	W	H	X	Y	X ₁	Y ₁
66P12L	12.00"	6.00"	6.05"	*	*	*	*
66P24L	24.00"	6.00"	6.05"	*	*	*	*
66P36L	36.00"	6.00"	6.05"	*	*	*	*
66P48L	48.00"	6.00"	6.05"	4.00"	1.50"	23.00"	24.00"
66P60L	60.00"	6.00"	6.05"	*	*	*	*
66P72L	72.00"	6.00"	6.05"	*	*	*	*
66P84L	84.00"	6.00"	6.05"	*	*	*	*
66P96L	96.00"	6.00"	6.05"	4.79"	6.00"	48.97"	48.00"

L-Length

W-Width

H-Height

X-0.875" Knock Out Distance

Y-0.575" Hanging Kit Distance

* - Please consult factory

REPLACEMENT LENS ORDERING INFORMATION

SERIES	DESCRIPTION
066PSF24L	Replacement Snap-in Frosted lens for 24"
066PSF48L	Replacement Snap-in Frosted lens for 48"
066PSF96L	Replacement Snap-in Frosted lens for 96"



Uplight & Downlight



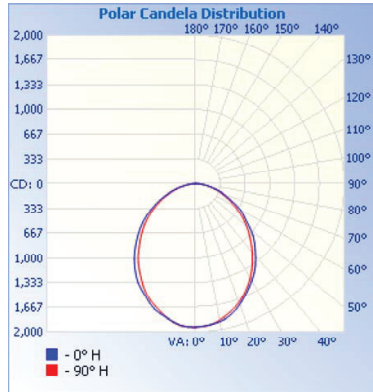
Continuous Run End



Wall/Pendant Mount

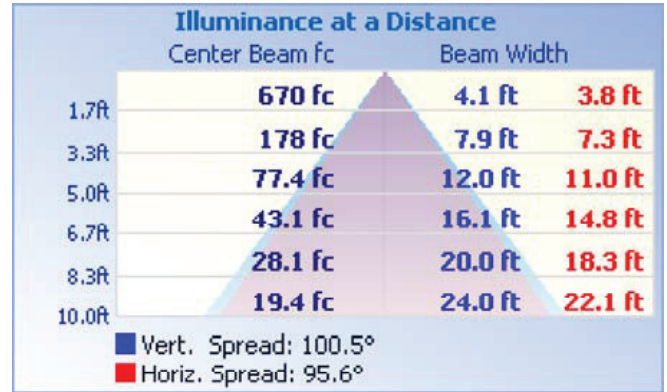
PHOTOMETRICS

48L-66PSF48LR48W4800LDMV40K

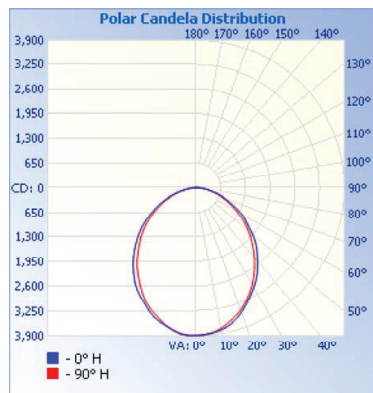


Zonal Lumen Summary

Zone	Lumens	% Luminaire
0-30	1,436.8	30.5%
0-40	2,288.0	48.6%
0-60	3,828.5	81.4%
60-90	872.7	18.6%
70-100	362.4	7.7%
90-120	2.8	0.1%
0-90	4,701.3	99.9%
90-180	2.8	0.1%
0-180	4,704.0	100%



96L-66PSF96LR96W9600LDMV40K



Zonal Lumen Summary

Zone	Lumens	% Luminaire
0-30	2,886.3	30.5%
0-40	4,596.4	48.6%
0-60	7,691.2	81.4%
60-90	1,753.2	18.6%
70-100	727.9	7.7%
90-120	5.6	0.1%
0-90	9,444.4	99.9%
90-180	5.6	0.1%
0-180	9,450.0	100%

