



Texas Fluorescents
Reinvented

CATALOG#: _____
PROJECT: _____
TYPE: _____

Series 44

LED Linear Pendant 4" X 4" (Direct and Indirect, Direct or Indirect)

The 4" x 4" steel profile provides a bold architectural look used individually or in continuous lengths to provide comfortable, bright general lighting. Snap fit frosted lens hides the LED arrays and provides excellent glare control. Easy to join, and easy to install. Available in standard sizes, outputs and finishes with a vast array of custom options.

CONSTRUCTION

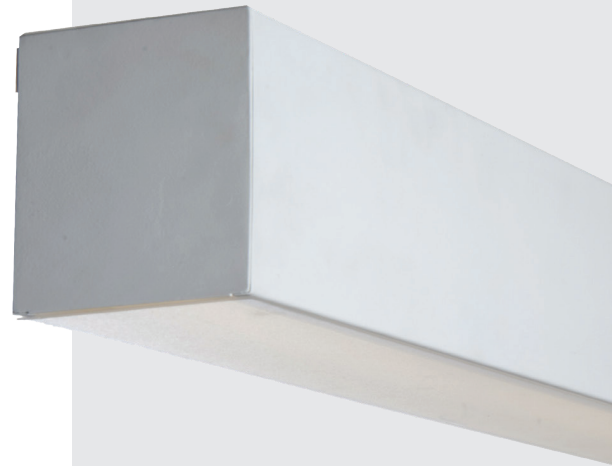
Die-formed and welded 22-gauge cold-rolled steel. Knockouts on ends allow continuous wireway mounting. Housing is specially designed with separating compartments for direct and indirect lighting. Can be ordered to achieve both direct and indirect lighting, or one or the other.

DIFFUSERS

Fixture accepts various lenses or louvers.

TYPICAL OPTIONS & ACCESSORIES

Cord sets, whips, occupancy sensors, hanging kits, wire guards. Emergency battery backup option available. Contact factory for more details.



DIMENSIONS

2ft. - 24"L x 4"W x 4"H
4ft. - 48"L x 4"W x 4"H
8ft. - 96"L x 4"W x 4"H
Custom lengths available;
contact factory

FEATURES & BENEFITS

- Pendant mount; also surface, recess or wall mounted
- For individual use or lined up in a continuous row, resulting in a clean line of light
- Recommended for commercial & residential applications
- Custom finishes available; contact factory
- CRI: >80 standard, 90 optional
- L70: >50,000 Hours
- Dimming: 0-10V 120-277V standard, 120V ELV/TRIAC optional
- Several Kelvin temperature options (3000K, 3500K, 4000K, 5000K)
- Emergency backup options available
- Power Factor: >0.90
- Suitable for damp and dry locations
- 5-Year Warranty





Texas Fluorescents
Reinvented


CATALOG# : _____
PROJECT : _____
TYPE : _____

Series 44

LED Linear Pendant 4" X 4"
(Direct and Indirect, Direct or Indirect)

ORDER INFORMATION

Factory at your fingertips. Fill in the blanks to create your part number or create a custom configuration.

| SENSOR | SERIES | LENS MATERIAL | LENGTH | W | | L | | DRIVER | | COLOR | | | | | | | |
|--|-----------------------------|---|----------------|--|---------|---|---|--|---|------------|--------------|------------|--------------|------------|--------------|------------|--------------|
| | | | | WATTAGE* | LUMENS* | WATTAGE* | LUMENS* | DRIVER | DRIVER | 30K | 3500K | 40K | 5000K | | | | |
| SS Sensor - On/Off SV Bi-level (xx) SD Daylight Harvesting  | 44W Wall Mount | MW Matte white lens (Only available for downlight) | 24L 24" | Up & Down | | | | DMV 0-10V Dimming | G120 ELV/TRIAC dimming at 120V only (only available with SS sensor) | 30K | 3000K | | | | | | |
| | | | | UR6WD12W | | Uplight 6 Watts Downlight 12 Watts 3600 Lumens | | | | | | 35K | 3500K | | | | |
| | | | | UR9WD18W | | Uplight 9 Watts Downlight 18 Watts 5400 Lumens | | | | | | | | 40K | 4000K | | |
| | | | | Up or Down Light Only | | | | | | | | | | | | 50K | 5000K |
| | | | | R12W1200L | | 12 Watts 1200 Lumens | | | | | | | | | | | |
| | | | | R24W2400L | | 24 Watts 2400 Lumens | | | | | | | | | | | |
| | 44P Pendant Mount | SF Snap-in frosted acrylic lens (85% transmission) Special for LEDs; only available for uplight and downlight | 48L 48" | Up & Down | | | | D1MV 0-10V Dimming (dim to 1%) | DMV(xx) 0-10V Dimming (xx) for percentage of light output when not occupied. (required for SV sensor) | 30K | 3000K | | | | | | |
| | | | | UR12WD24W | | Uplight 12 Watts Downlight 24 Watts 3600 Lumens | | | | | | 35K | 3500K | | | | |
| | | | | UR18WD36W | | Uplight 18 Watts Downlight 36 Watts 5400 Lumens | | | | | | | | 40K | 4000K | | |
| | | | | Up or Down Light Only | | | | | | | | | | | | 50K | 5000K |
| | | | | R24W2400L | | 24 Watts 2400 Lumens | | | | | | | | | | | |
| | | | | R48W4800L | | 48 Watts 4800 Lumens | | | | | | | | | | | |
| 96L 96" | | Up & Down | | | | DMV 0-10V Dimming | G120 ELV/TRIAC dimming at 120V only (only available with SS sensor) | 30K | 3000K | | | | | | | | |
| | | UR24WD48W | | Uplight 24 Watts Downlight 48 Watts 7200 Lumens | | | | | | 35K | 3500K | | | | | | |
| | | UR36WD72W | | Uplight 36 Watts Downlight 72 Watts 10800 Lumens | | | | | | | | 40K | 4000K | | | | |
| | | Up or Down Light Only | | | | | | | | | | | | 50K | 5000K | | |
| | | R48W4800L | | 48 Watts 4800 Lumens | | | | | | | | | | | | | |
| | | R96W9600L | | 96 Watts 9600 Lumens | | | | | | | | | | | | | |

Additional Options

| CRI** | FINISH | CONFIGURATIONS | OPTIONS |
|---|--|---|---|
| Blank 80 CRI 90 90 CRI | WH White BK Black SI Silver | Blank Individual B Beginner Run E Ender Run J Joiner | HC301WH Cable kit with 4' cable & 3 wires power feed/cable incl. and white canopy HC302WH Cable kit with 12' cable & 3 wires power feed/cable incl. and white canopy HC3015WWH Cable kit with 4' cable & 5 wires power feed/cable incl. and white canopy HC3025WWH Cable kit with 12' cable & 5 wires power feed/cable incl. and white canopy HC3016WH Cable kit with 4' cable & 6 wires power feed/cable incl and white canopy HC3026WH Cable kit with 12' cable & 6 wires power feed/cable incl and white canopy 2SCS24WH Two stem kits with 24" stem, canopy and mounting hardware for a 4' fixture EM 10W Emergency battery backup (internal, excludes less than 4ft) EM12 12W Emergency battery backup (internal, excludes less than 4ft) EM20 20W Emergency battery backup (remote only) |

Note:

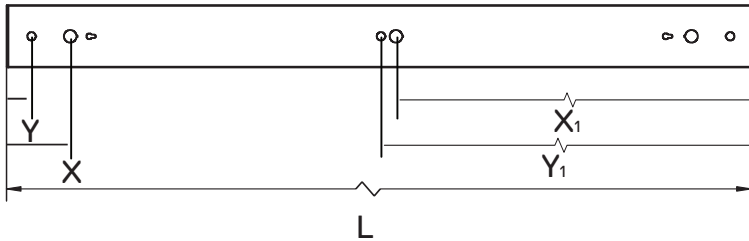
*Programmable LED drivers allow custom configured wattages and corresponding lumens.

**Consult factory for 90CRI 5000K availability.

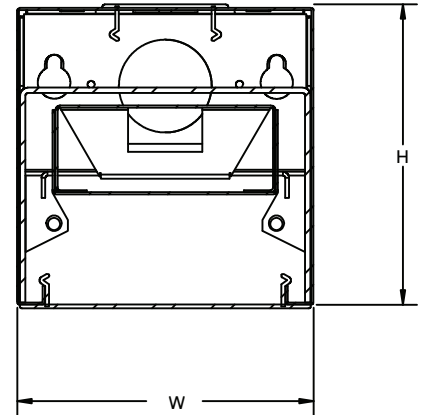
We reserve the right to change design, materials, LEDs and finish in any way that will not alter installed appearance or reduce function and performance.

DRAWINGS & IMAGES

PENDANT MOUNT



End Side View



| PART | L | W | H | X | Y | X ₁ | Y ₁ |
|--------|--------|-------|-------|-------|-------|----------------|----------------|
| 44P12L | 12.00" | 4.00" | 4.05" | * | * | * | * |
| 44P24L | 24.00" | 4.00" | 4.05" | * | * | * | * |
| 44P36L | 36.00" | 4.00" | 4.05" | * | * | * | * |
| 44P48L | 48.00" | 4.00" | 4.05" | 4.00" | 1.50" | 23.00" | 24.00" |
| 44P60L | 60.00" | 4.00" | 4.05" | * | * | * | * |
| 44P72L | 72.00" | 4.00" | 4.05" | * | * | * | * |
| 44P84L | 84.00" | 4.00" | 4.05" | * | * | * | * |
| 44P96L | 96.00" | 4.00" | 4.05" | 4.79" | 6.00" | 48.97" | 48.00" |

L-Length

W-Width

H-Height

X-0.875" Knock Out Distance

Y-0.575" Hanging Kit Distance

* - Please consult factory

REPLACEMENT LENS ORDERING INFORMATION

| SERIES | DESCRIPTION |
|-----------|--|
| 044PSF24L | Replacement Snap-in Frosted lens for 24" |
| 044PSF48L | Replacement Snap-in Frosted lens for 48" |
| 044PSF96L | Replacement Snap-in Frosted lens for 96" |



Uplight & Downlight



Continuous Run End



Wall/Pendant Mount